



# morton.

**Penrith** 104/26 Lord Sheffield Circuit



With respect to the government's easing of restrictions around open homes but in a continuing effort to help stop the spread of COVID-19, we will conduct our scheduled open homes with social distancing and hygiene protocols in place, as well as continue to offer private appointments for those who prefer that method. Please contact the listing agent for more information.

Lumina is an exciting precinct perfectly positioned within Penrith's emerging urban centre - a vibrant community to suit everyone and every lifestyle. A short walk leads you to Westfield's shops and entertainment and Penrith's famed dining precinct. Convenient transport and excellent schools are close by, as well as stunning parklands; from Ron Mulock Oval through to the Nepean River and the foothills of the Blue Mountains. Within the precinct you will find cafes ready to brew your morning coffee as you prepare for a day of work or a weekend family outing.

- 200 metres from Penrith train station

[morton.com.au](https://morton.com.au)

### View

As advertised or by appointment

### Agent

**David Lipman**

📞 0409 663 535

✉️ [david@morton.com.au](mailto:david@morton.com.au)



# LUMINA

SHEFFIELD QUARTER

THORNTON

ONE BEDROOM  
APARTMENT

UNIT 104

INTERNAL AREA	63 m <sup>2</sup>
EXTERNAL AREA	33 m <sup>2</sup>

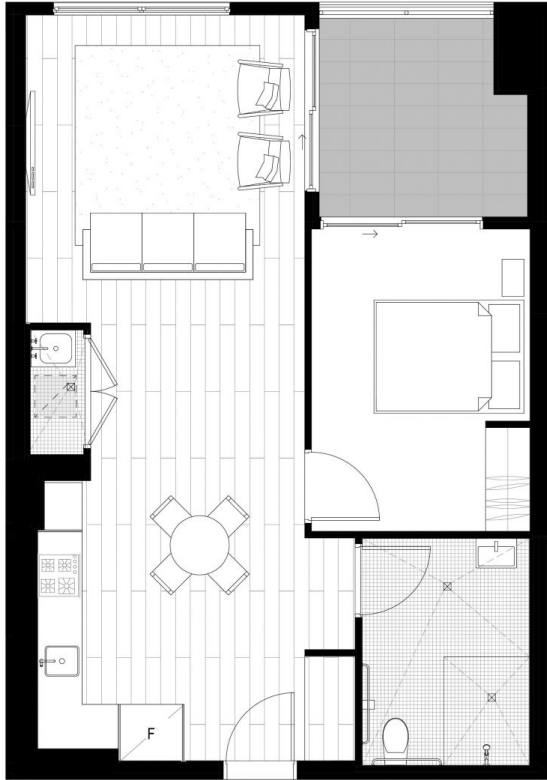
TOTAL	96 m <sup>2</sup>
-------	-------------------

PARKING	2
---------	---



## URBAN

This floor plan has been prepared for marketing purposes only. All descriptions, dimensions, depictions and other details in this floor plan may not be to scale and may vary from the property as built. Your attention is drawn to the special conditions of the contract for sale of land. No third party has any authority to make or give any representation or warranty in relation to the property unless the representation or warranty is confirmed by Developer and included in the contract for sale of land.



# LUMINA

SHEFFIELD QUARTER

THORNTON

ONE BEDROOM  
APARTMENT

UNIT 210, 310, 410

INTERNAL AREA 59 m<sup>2</sup>  
EXTERNAL AREA 7 m<sup>2</sup>

TOTAL 66 m<sup>2</sup>

PARKING 1



NORTH

## URBAN

This floor plan has been prepared for marketing purposes only. All descriptions, dimensions, depictions and other details in this floor plan may not be to scale and may vary from the property as built. Your attention is drawn to the special conditions of the contract for sale of land. No third party has any authority to make or give any representation or warranty in relation to the property unless the representation or warranty is confirmed by Developer and included in the contract for sale of land.