

morton.

Wentworth Point 805/8 Baywater Drive

 1  1  1

The Waterfront is located moments to Sydney Olympic Park main venues, train station, Bicentennial Park and Millennium Parklands. Located in Messina, this is your opportunity to move into this two bedroom apartment only a short stroll from The Promenade and The Piazza.

- Located on Level 8
- Combined living and dining rooms
- Air conditioning in lounge room
- Full size kitchen with designer modern stainless steel appliances
- Gas cooking and quality finishes throughout
- Great size bedroom with built-in wardrobe
- Laundry room and clothes dryer
- One car space with storage cage

View

As advertised or by appointment

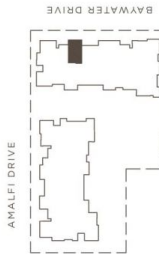
Agent

Nevena Petrovic

 0428 835 910

 nevena@morton.com.au

morton.com.au



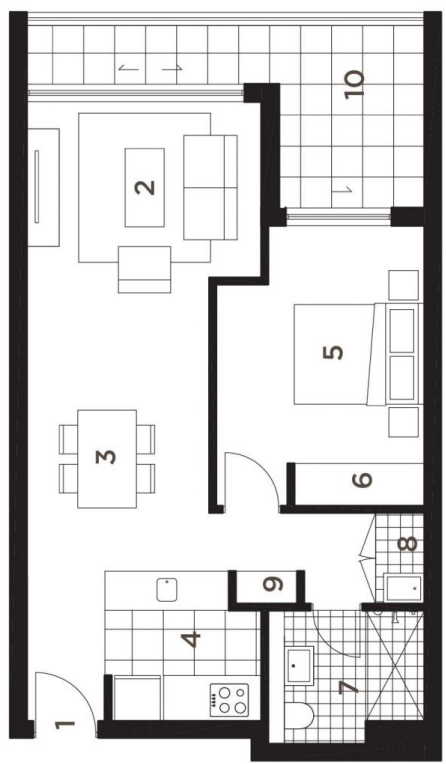
LOCATION
MARINE PARADE

UNIT 805
1 BEDROOM

INTERNAL	54 sqm
BALCONY	10 sqm
TOTAL AREA	64 sqm

KEY:

- 1 Entry
- 2 Living
- 3 Dining
- 4 Kitchen
- 5 Bedroom
- 6 Wardrobe
- 7 Bathroom
- 8 Laundry
- 9 Store
- 10 Balcony



28.10.2010
REV. D



Disclaimer: The particulars are set out as a general outline for the guidance of intending purchasers and do not constitute an offer or contract. All descriptions, dimensions, illustrations and necessary permissions for use and other details are given in good faith and are believed to be correct, but any intending purchasers should not rely on them as statements or representations of fact, but must satisfy themselves by inspection or otherwise to the correctness of each item, and where necessary seek advice. No third party supplier or their agents has any authority to make or give any representations or warranty in relation to this property.
* External areas may be larger for courtyard apartments. Refer to the detailed area schedule.



THE WATERFRONT
WENTWORTH POINT