



morton.

Zetland 106/1 Hutchinson Walk

 2  1

Located in the vibrant Victoria Park precinct, just 3km from the CBD, the near new Platinum development by Payce is sophisticated urban living at its best. Platinum's five buildings surround a beautifully landscaped 1,930sqm elevated garden incorporating an alfresco dining and barbecue area, intimate pavilions for relaxing and an Asian-inspired bamboo grove. This apartments boasts a private courtyard and represents the upper echelon of apartment living.

- Ground floor courtyard apartment ideal for small pets
- State of the art health club featuring pool, gymnasium and steam room
- Tiled flooring in living and kitchen
- Timber flooring in bedrooms
- Stainless steel Miele appliances
- LED lighting throughout
- Stone bench tops, mirrored splash back
- Data/TV points in living and main bedroom
- Security building, Video intercom
- Air conditioning throughout

morton.com.au

View

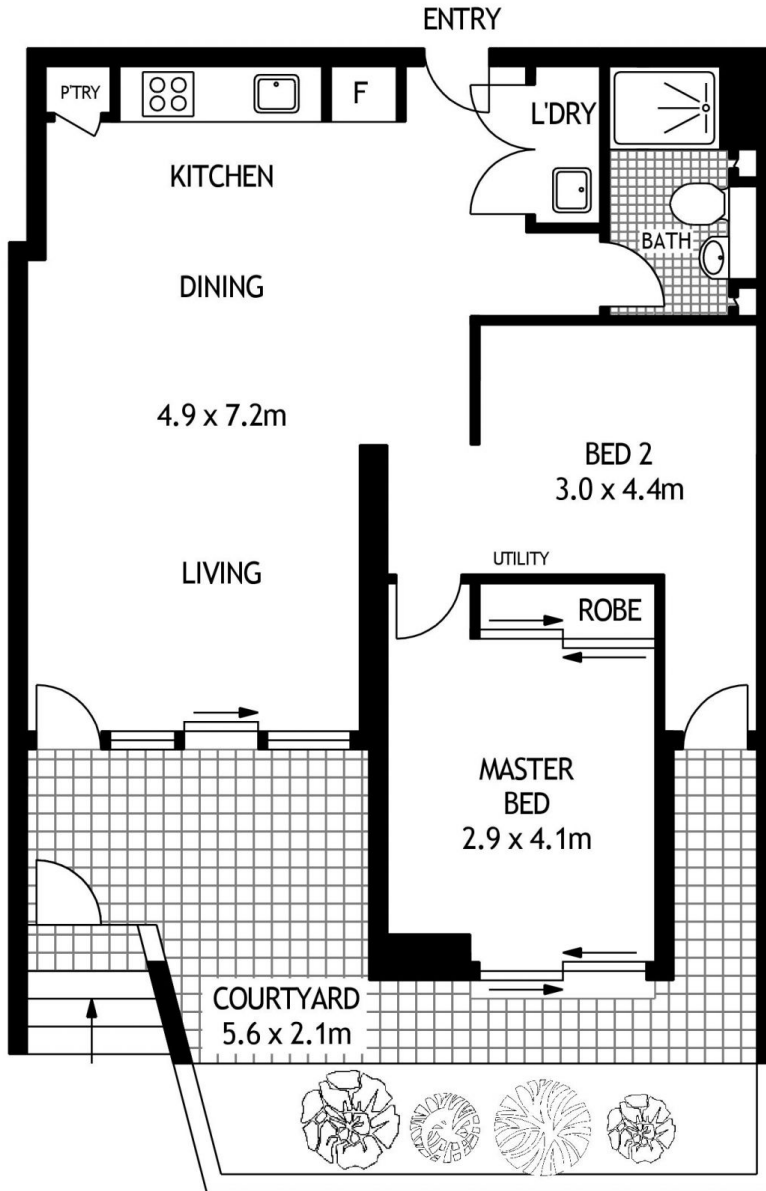
As advertised or by appointment

Agent

Ayush Jain

 0410 539 793

 ayush@morton.com.au



106/1 HUTCHINSON WALK

ZETLAND

SCAPE Floor Planing Disclaimer: This floor plan is conceptual only, it is provided for illustrative purposes only and should not be relied upon. We make no guarantees to the correctness of this plan. All interested parties should make and rely on their own enquiries in determining the accuracy of the information contained in this floor plan.