



morton.

Waterloo 341/2-4 Powell Street

 2  2  1

Superbly placed with a north facing aspect, this contemporary split-level apartment at the 'Mondrian' presents a combination of award winning environmental designs and style. The Stunning interior is finished to perfection with new carpets and paint throughout, highlighted by the surrounding landscaped gardens. Without a doubt, you will see why this complex has won the reputation as one of the most desirable residential addresses in the area.

- New carpets, blinds and paint throughout
- Secure access, featuring security Intercom
- Large entertainers' balcony with gas bayonet for BBQ's
- Open plan living/dining with floor-to-ceiling windows with sunny outlook
- Extra space for a study nook with sliding doors for privacy
- Sleek integrated gas kitchen with Smeg appliances
- Large bedrooms with built-in robes and bay windows
- Fully tiled designer bathrooms, main with bathtub
- Internal laundry and ample storage
- Secure underground car space with motorcycle bay

morton.com.au

View

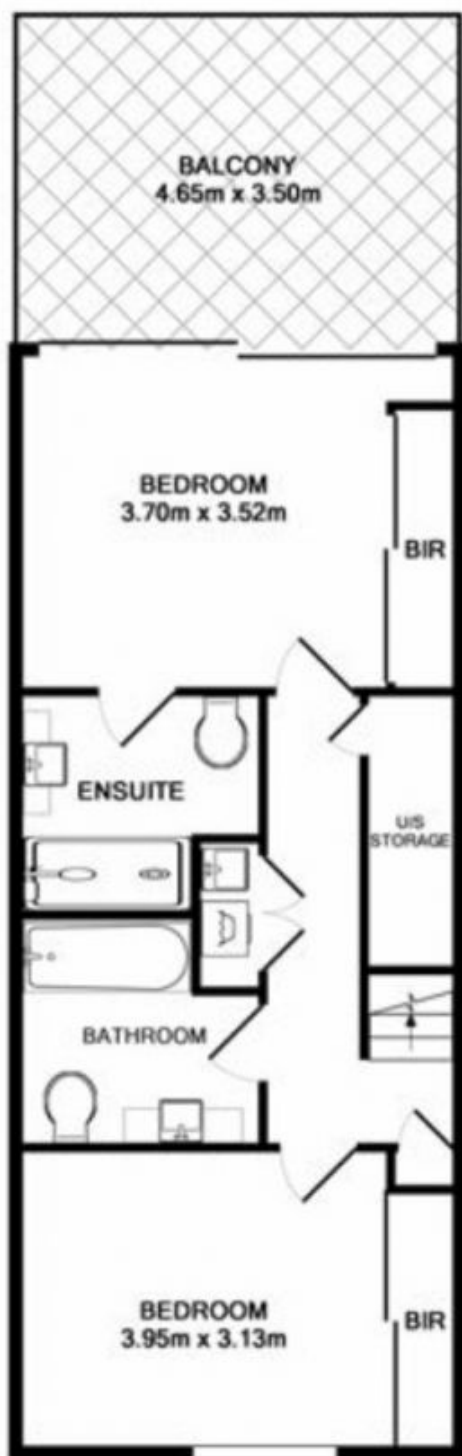
As advertised or by appointment

Agent

Sarah Fowell

 0437 492 129

 sarah@morton.com.au



APARTMENT
APPROX. FLOOR
AREA 133.0 SQ.M.

CAR SPACE
APPROX. FLOOR
AREA 17.0 SQ.M.



TOTAL APPROX. FLOOR AREA 150.0 SQ.M.
Measurements are approximate. Not to Scale. For illustrative purposes only.
Produced by Open2View.com.au