



morton.

Wentworth Point 251/2a The Crescent

 2  2  1

Located in Lipari at The Waterfront, here is your opportunity to move into this two bedroom apartment. A short stroll from The Promenade and The Piazza, The Waterfront is located moments to Sydney Olympic Park main venues and train station, Bicentennial Park and Millennium Parklands.

- Ducted air conditioning
- Kitchen equipped with stainless steel appliances
- Open plan living + dining
- Good size bedrooms with built in wardrobe
- Laundry with clothes dryer
- Great size balcony facing the Crescent
- One secure car space + storage cage

View

As advertised or by appointment

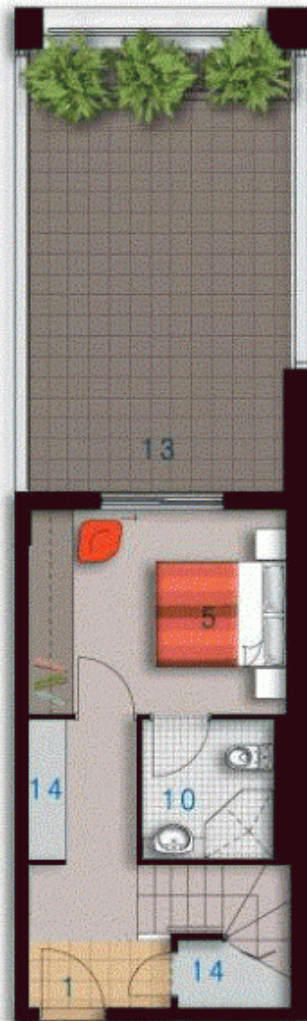
Agent

Sarah Fowell

 0437 492 129

 rentals@morton.com.au

morton.com.au

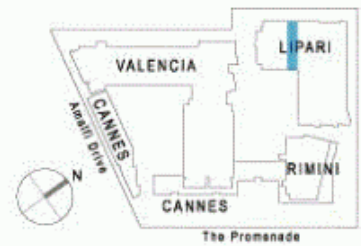


LOWER



UPPER

ENTRY	01
LIVING	02
DINING	03
KITCHEN	04
BEDROOM 1	05
BEDROOM 2	06
BATHROOM	09
ENSUITE	10
LAUNDRY	11
BALCONY	12
TERRACE	13
STORAGE	14
CLOTHES DRYING	15



Lipari

Unit 253

Lot Number	85
Type	2 Bedroom
Unit Area	94m ²
Balcony	6m ²
Terrace	41m ²
Total	141m ²
Scale	1:100
Revision	A [16.02.07]



Disclaimer: All Layouts are indicative only, and subject to change.

0 2.5 5M