



morton.

Wentworth Point 407/18 Corniche Drive

 2  2  2

With respect to the government's easing of restrictions around open homes but in a continuing effort to help stop the spread of COVID-19, we will conduct our scheduled open homes with social distancing and hygiene protocols in place, as well as continue to offer private appointments for those who prefer that method.

Please contact the listing agent for more information.

The Waterfront is located moments to Sydney Olympic Park main venues, train station, Bicentennial Park and Millennium Parklands. Located in the prized Catania building, overlooking the Pulse outdoor pool, this property provides privacy and convenience.

- Combined living and dining rooms
- Air conditioning
- Full size kitchen with designer modern stainless steel appliances
- Gas cooking and quality finishes throughout
- Generous size separate living areas

[morton.com.au](https://www.morton.com.au)

View

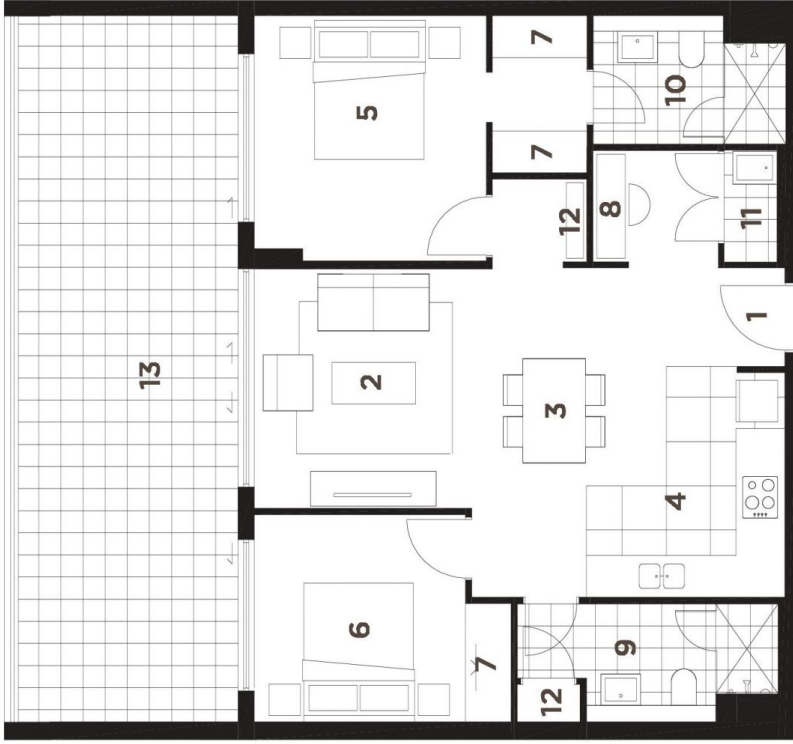
As advertised or by appointment

Agent

Sarah Fowell

 0437 492 129

 rentals@morton.com.au

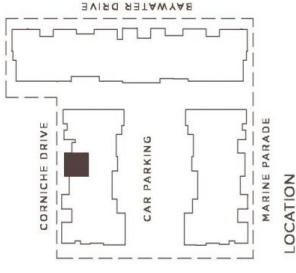


UNIT 407 2 BEDROOM

INTERNAL 76 sqm
BALCONY 23 sqm
TOTAL AREA 99 sqm

KEY:

- 1 Entry
- 2 Living
- 3 Dining
- 4 Kitchen
- 5 Bedroom 1
- 6 Bedroom 2
- 7 Wardrobe
- 8 Study
- 9 Bathroom
- 10 Ensuite
- 11 Laundry
- 12 Store
- 13 Balcony



REV. D



Disclaimer: The particulars are set out as a general outline for the guidance of intending purchasers and do not constitute an offer or contract. All descriptions, dimensions, references to conditions and necessary permissions for use and other details are given in good faith and are believed to be correct, but any intending purchasers should not rely on them as statements or representations of fact, but must satisfy themselves by inspection or otherwise to the correctness of each item, and where necessary seek advice. No third party supplier or their agents has any authority to make or give any representations or warranty in relation to this property.
* External areas may be larger for courtyard apartments. Refer to the detailed area schedule.