



# morton.

**Pyrmont** 83/1 Murray Street

2 2 1

Single level luxury defines this light filled executive apartment. Stylish in its design and generous in its layout, it offers the ultimate city-edge lifestyle with flowing interiors, quality finishes and a user-friendly oversized floor plan. Set in Mirvac's prestige Gateway complex, it offers a home of outstanding quality and enjoys a premier location on the doorstep of Darling Harbour, Star Casino, Barangaroo and Sydney's CBD.

- Prized northern aspect with skyline Barangaroo views
- Open plan light filled living space flows to balcony
- Overlooks tranquil central gardens
- Timber floors throughout, high ceilings
- Sleek stone kitchen, quality gas appliances, breakfast area
- Double bedrooms include a master with dual built-ins and ensuite
- Quality full brick construction, full sized laundry
- Secure under cover parking + storage
- Ducted air-conditioning, intercom entrance
- Onsite resort facilities include pool, spa, sauna and gym

### View

As advertised or by appointment

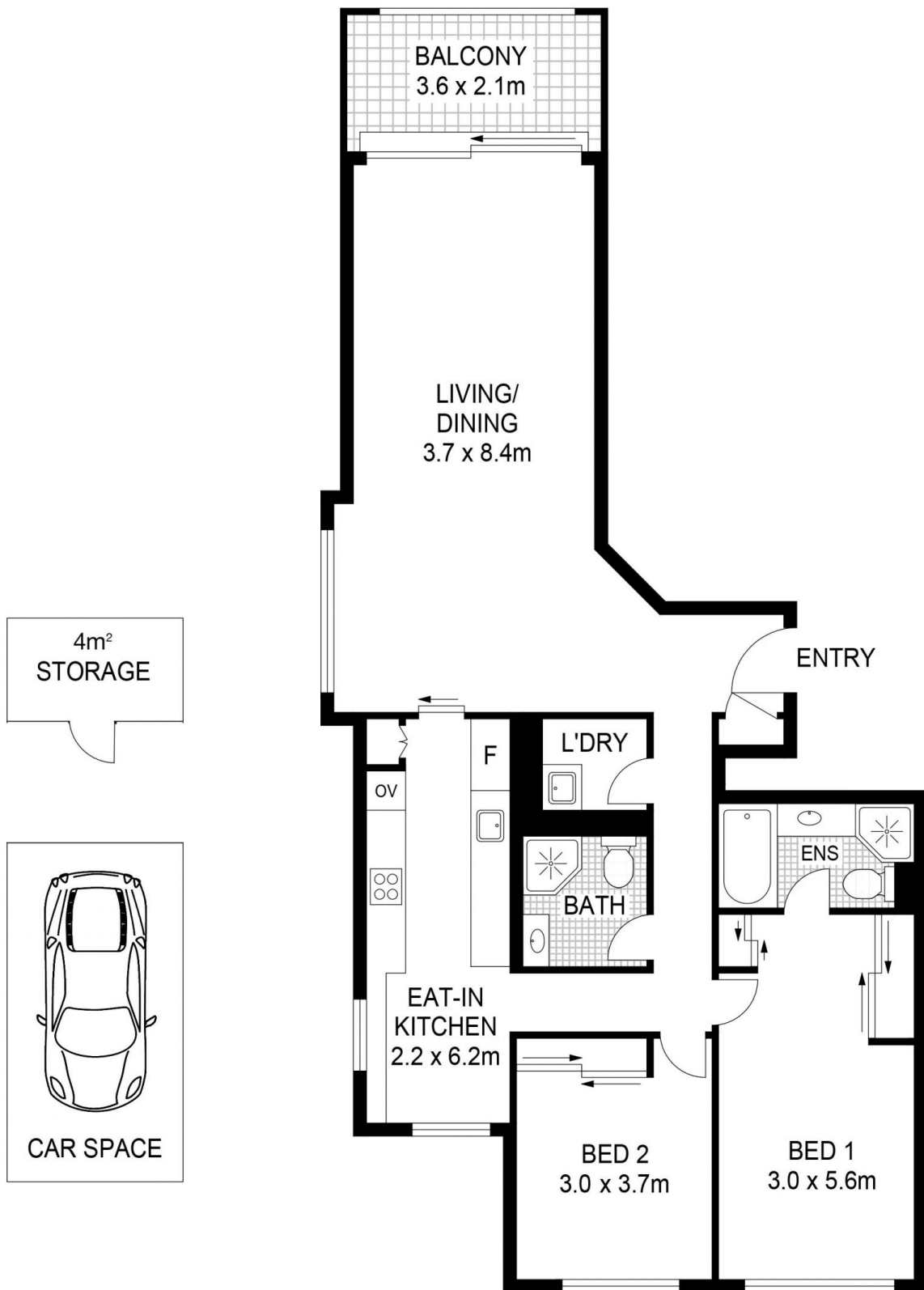
### Agent

**James Crow**

0410 593 057

james@morton.com.au

[morton.com.au](http://morton.com.au)



PLANS SHOWN ONLY INDICATIVE OF LAYOUT. DIMENSIONS ARE APPROXIMATE.

