



morton.

Sydney 807/281 Elizabeth Street

 1  2  1

This light filled and spacious, one bedroom, two bathroom apartment is set in a superb location close to all amenities and opposite the lush expanse of Hyde Park.

Set in a prestigious, 24 hour security building, in this coveted parkside locale, you'll enjoy an ideal lifestyle near the centre of the CBD. Just moments to a host of entertainment, restaurants and bars of the city and East Sydney, Galleries, Museums, and the business and legal hub of Sydney.

- Versatile open floorplan offering, free-flowing space leading to private balcony
- Well appointed granite kitchen with stainless steel gas appliances- whitegoods included
- Carpeted bedroom with built-ins, queen-sized master with ensuite
- Additional guest powder room
- Reverse cycle air conditioning, parquet flooring, plantation shutters
- Separate internal laundry, secure undercover parking
- Resort style pool, spa, gym, sauna, 24 hour concierge,


morton.com.au

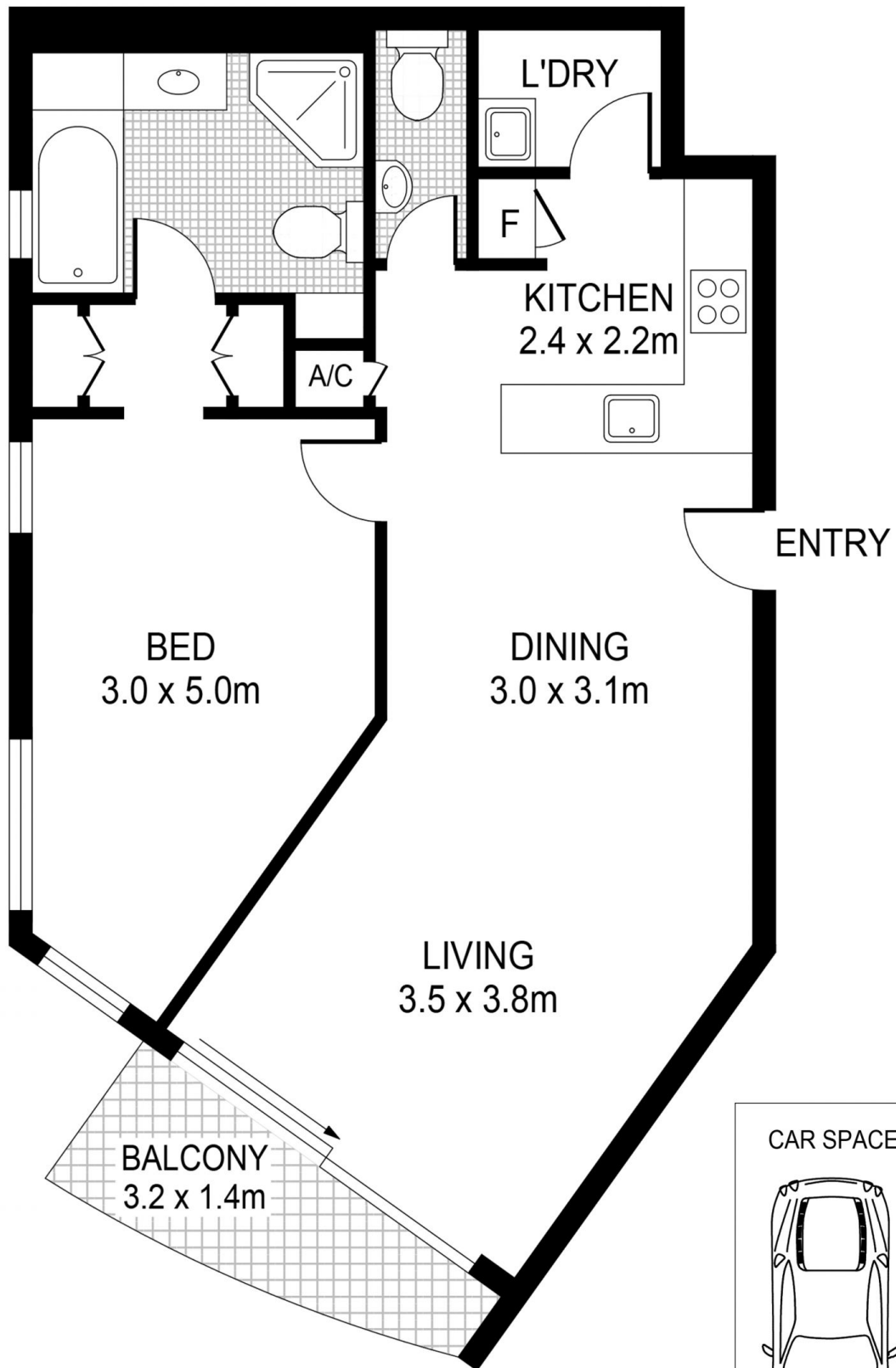
View

As advertised or by appointment

Agent

Morton RE

  rentals@morton.com.au



PLANS SHOWN ONLY INDICATIVE OF LAYOUT. DIMENSIONS ARE APPROXIMATE.



SYDNEY 807/281 Elizabeth Street

morton.