



morton.

Pyrmont 604/50 Murray Street

 2  2  1

With respect to the government's easing of restrictions around open homes but in a continuing effort to help stop the spread of COVID-19, we will conduct our scheduled open homes with social distancing and hygiene protocols in place, as well as continue to offer private appointments for those who prefer that method.

Please contact the listing agent for more information.

There are not many residences that can create such an immediate impression of inner-city style, size and quality design. Gazing due east with jaw dropping views over Sydney's Harbour & dazzling skyline, this spacious apartment provides a luxury home with generous interiors, high-end finishes and over 100 sqm of in/outdoor living space. It represents a rare opportunity to secure a stunning executive retreat and become a part of the privileged 'One Darling Harbour' community.

- A flowing open plan design featuring top quality new flooring
- Entertainers terrace with absolute harbour & city views

morton.com.au

View

As advertised or by appointment


Agents

James Crow

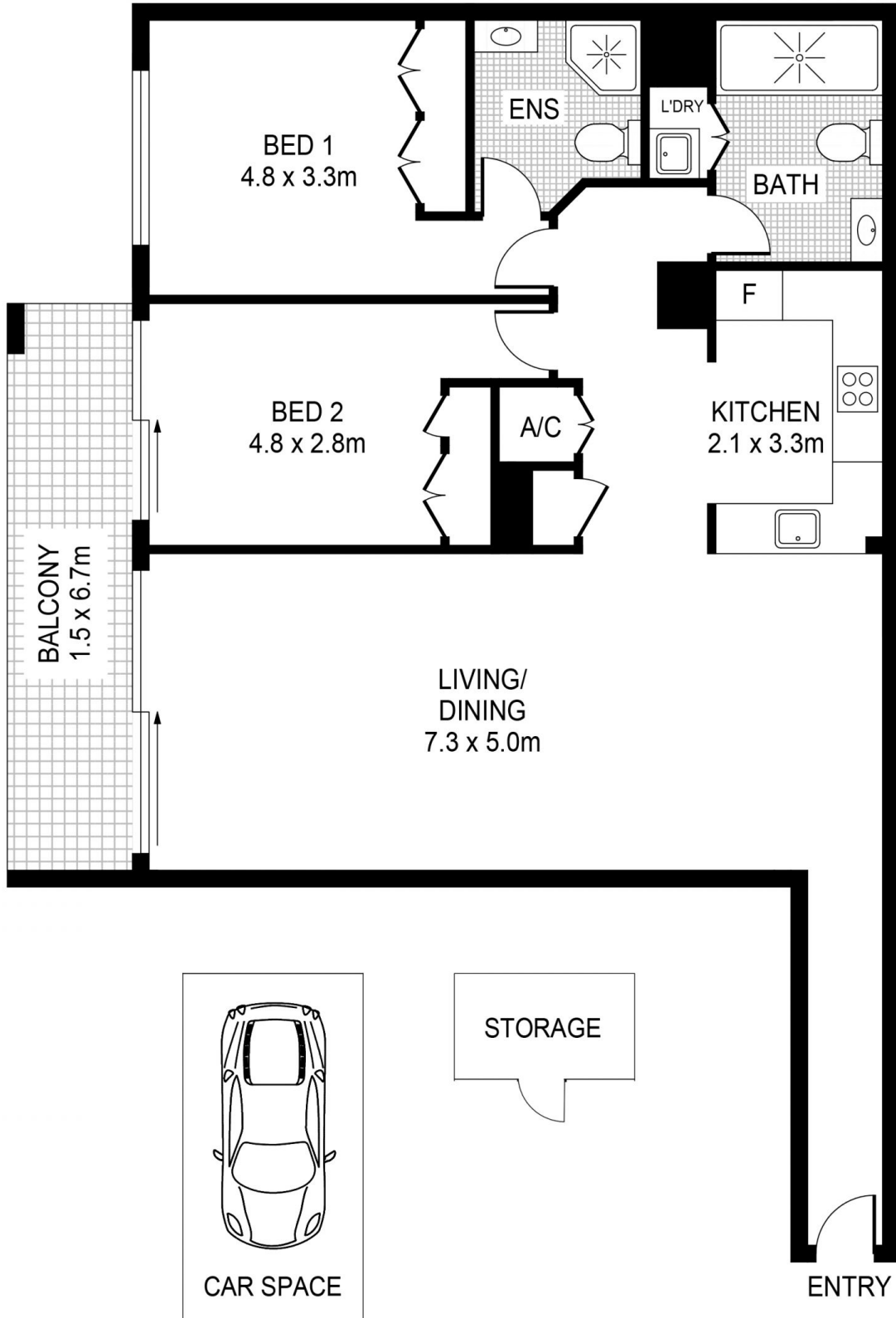
 0410 593 057

 james@morton.com.au

Sarah Li

 0439 528 933

 sarahli@morton.com.au



PLANS SHOWN ONLY INDICATIVE OF LAYOUT. DIMENSIONS ARE APPROXIMATE.



PYRMONT 604/50 Murray Street

morton.