



morton.

Wentworth Point 412/48 Amalfi Drive

 1  1  1

The Waterfront is located moments to Sydney Olympic Park main venues, train station, Bicentennial Park and Millennium Parklands. Located in Messina, this is your opportunity to move into this one bedroom apartment only a short stroll from The Promenade and The Piazza.

- Located on level four
- Combined living and dining rooms with air conditioning
- Full size kitchen with designer modern stainless steel appliances
- Gas cooking and quality finishes throughout
- Good size bedroom with built-in wardrobe
- Generous sized balcony
- Laundry room and clothes dryer
- Single car spaces and storage cage.

View

As advertised or by appointment

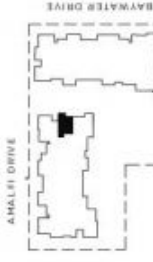
Agent

Sarah Fowell

 0437 492 129

 rentals@morton.com.au

morton.com.au



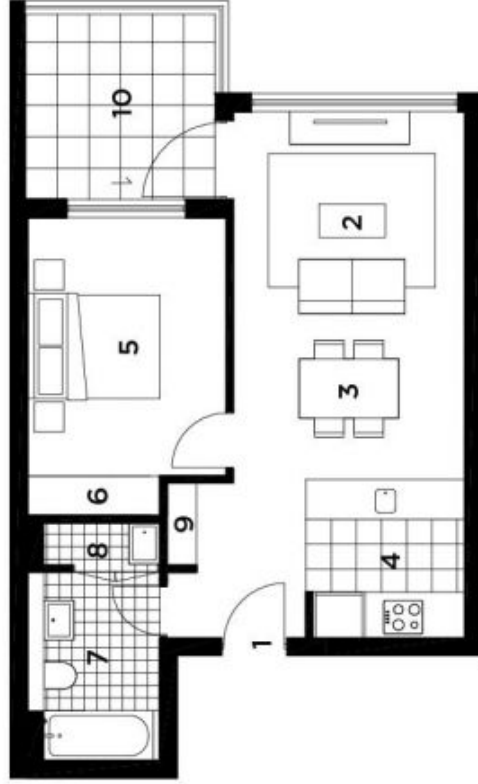
LOCATION
MARINE PARADE

UNIT 412
1 BEDROOM

INTERNAL	51 sqm
BALCONY	8 sqm
TOTAL AREA	59 sqm

KEY:

- 1 Entry
- 2 Living
- 3 Dining
- 4 Kitchen
- 5 Bedroom
- 6 Wardrobe
- 7 Bathroom
- 8 Laundry
- 9 Store
- 10 Balcony



28.10.2010
REV. D



MESSINA
THE WATERFRONT



THE WATERFRONT
WENTWORTH POINT

Exclusion: The particulars are not to be used as a general outline for the purposes of making purchases and do not constitute an offer or contract. All positions, dimensions, elevations, materials, finishes and necessary permits, steps for or all other kind, are given as good faith and are believed to be correct. But any intending purchaser should not rely on these or the plans or representations of the L.T. or any other person in connection with the purchase of the property. The L.T. is not to be taken as a guarantee of the accuracy of the information contained in the particulars. The L.T. is not to be taken as a guarantee of the accuracy of the information contained in the particulars. The L.T. is not to be taken as a guarantee of the accuracy of the information contained in the particulars. The L.T. is not to be taken as a guarantee of the accuracy of the information contained in the particulars.