



morton.

Wentworth Point 715/37 Amalfi Drive

 2  2  1

The Waterfront is located moments to Sydney Olympic Park main venues, train station, Bicentennial Park and Millennium Parklands. Located in Sorrento, this is your opportunity to move into this two bedroom top floor apartment only a short stroll from The Promenade and The Piazza.

- Corner apartment located on level seven
- Air conditioning in the lounge room
- Great size full kitchen
- Gas cooking and quality finishes throughout
- Generous size separate living areas
- Good size bedrooms with built-in wardrobes
- Laundry room and clothes dryer
- Single car space and storage cage.

View

As advertised or by appointment

Agent

Sarah Fowell

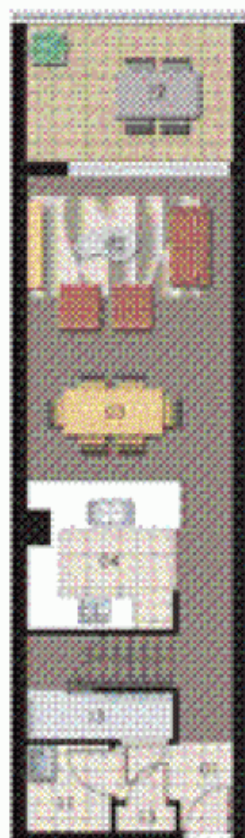
 0437 492 129

 rentals@morton.com.au

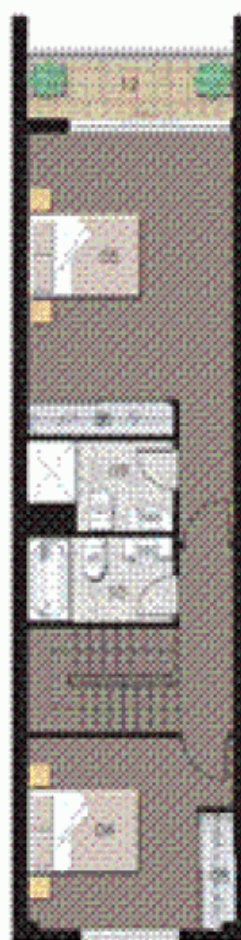
morton.com.au

SORRENTO

THE WATERFRONT
AT ROXBURY BAY



LEVEL 7



LEVEL 8

2 1 0 2 4 3

ENTRY	05	WALKWAY	08
LIVING	10	DECK	05
DINING	10	BATHROOM	05
KITCHEN	04	LAUNDRY	07
BEDROOM 1	09	BALCONY	07
BEDROOM 2	09	STORAGE	05
BEDROOM 3	07		



Unit 715

Unit Number	15
Type	2 Bedroom
Unit Area	95.00m ²
Balance	14.00m ²
Total	109.00m ²