



Your wellbeing  
is our #1 priority

morton.



**morton.**

**Penrith** D824/1-39 Lord Sheffield Circuit

2 2 1

Located in the hub of North Penrith, Harts Landing offers contemporary urban living in a master-planned vibrant community called Thornton Estate. Only metres from Penrith train station, Westfield shopping centre and local parks.

Features include:

- Largest and only North and South facing plan in the building
- Oversized lounge flows to the north-facing covered balcony
- Floor to ceiling windows in bedrooms w Blue Mountains views
- Natural coloured timber looking tiles in the living and dining
- Efficient LED lighting and block out roller blinds throughout
- Reverse cycle air conditioning, internal laundry with dryer
- Stylish kitchen w stone bench-tops, soft close cupboards
- Four burner stove top with stainless steel appliances
- Wool-blend carpeted bedrooms with mirrored built-in robes
- NBN ready, Data/TV/PayTV points in the living & bedroom
- Quality bathroom with mirrored vanity cabinet

**View**

As advertised or by appointment

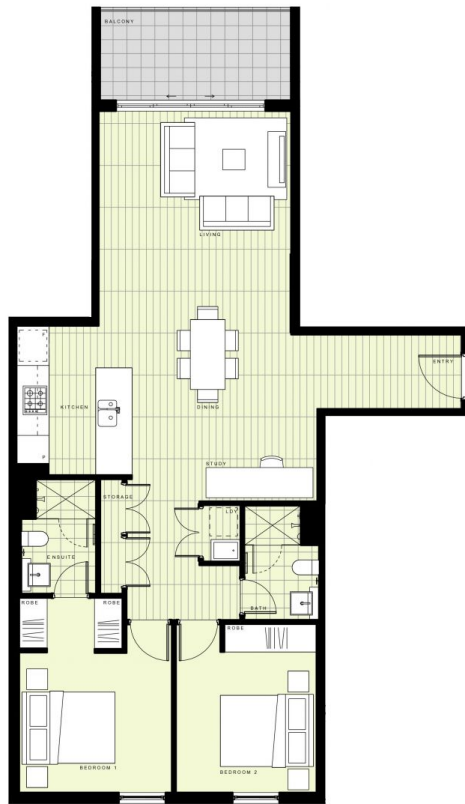
**Agent**

**Amy Torbarina**

0438 977 172

amy@morton.com.au

**morton.com.au**



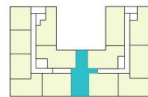
## BUILDING A

### LEVEL 8

#### APARTMENT A824 LOT 93

2 BEDROOM + STUDY

INTERNAL AREA	87m <sup>2</sup>
EXTERNAL AREA	7m <sup>2</sup>
<b>TOTAL</b>	<b>94m<sup>2</sup></b>



Disclaimer: This floor plan has been prepared for marketing purposes only. All descriptions, dimensions, depictions and other details in this floor plan may not be to scale and may vary from the property as built. Your attention is drawn to the special conditions of the contract for sale of land. No third party has any authority to make or give any representation or warranty in relation to the property unless the representation or warranty is confirmed by the vendor and included in the contract for sale of land. Revised floor plans - 14.08.18

**CALL 1300 548 588**  
**HARTSLANDING.COM.AU**  
 LORD SHEFFIELD CIRCUIT, PENRITH  
**LINK DISPLAY SUITE**  
 22 GADIGAL AVENUE, ZETLAND

PROUDLY DEVELOPED BY **PAYCE** SALES BY **LINK**