

morton.

Wentworth Point 8027/11 Bennelong Parkway

 2  1  1

With respect to the latest government's COVID-19 restrictions we will be conducting open homes and private appointments with mandatory face masks, sanitisation, QR code check ins, and 1 person per 4sqm. Please submit an enquiry or contact the agent to be kept up to date with inspection times and register your attendance for viewings.

Great opportunity to lease one of the finest and newest apartments at One The Waterfront, an iconic development in Wentworth Point. On the Waterfront offers a unique luxury lifestyle with high-end indoor and outdoor facilities to entertain you all year round. Located at the foot of Wentworth Point, it is in easy access to transport services to Rhodes, Parramatta and Circular Quay.

- Generous open plan design with latest in décor finishes
- Quality designer kitchen with Bosch built-in appliances
- Bathroom has floor to ceiling tiles, mirrored vanity cabinet
- Spacious bedroom with built-in robe
- Internal laundry with dryer, air-conditioning, fast speed fiber

morton.com.au

View

As advertised or by appointment

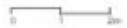
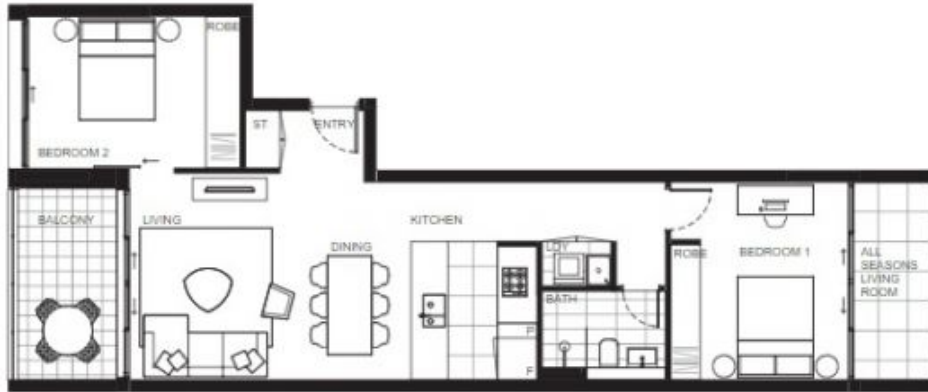
Agent

Sarah Fowell

 0437 492 129

 rentals@morton.com.au

BUILDING
ONE B



This plan is preliminary and does not constitute an offer or contract. Please read all terms and conditions of the development and all relevant legislation. Features and specifications are subject to change without notice in accordance with the terms of the contract of sale. All parties must read the contract of sale to obtain the information as it is not guaranteed. No liability will be accepted for any necessary amendment. **Plan issued 11/21/19 Q**

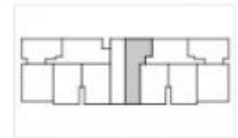
ONE

THE WATERFRONT

APARTMENT | LOT
8027 | 55

2 Bed + 1 Bath

INTERNAL 81m²
Incl. All Seasons Living Room
EXTERNAL 8m²
TOTAL 89m²



BUILDING ONE B LEVEL 8

ONE THE WATERFRONT DISPLAY CENTRE
Shop 46, The Piazza, 21 Bennelong Parkway
Wentworth Point NSW 2127
1300 RES 465 onethewaterfront.com.au

DEVELOPED BY **PIETY THP** SALES BY **LINK**