

# morton.

**Pyrmont** 212/1 Wattle Crescent

 2  2  1

Occupying a premier position in 'Pier 99', this exceptional near new residence defines affordable luxury living without compromise. Finished to the most exacting of standards it is literally moments to the sparkling waters of Blackwattle Bay. Features include:

- Generous open plan living which flows onto enclosed balcony
- Split level with bedrooms located on the top level
- Two carpeted double bedrooms with built-in robes, master has ensuite
- Sleek kitchen with stone benches, Miele gas appliances including dishwasher
- Timber floors and ducted air con
- Secure parking, internal laundry with tumble dryer and a storage cage

#### View

As advertised or by appointment

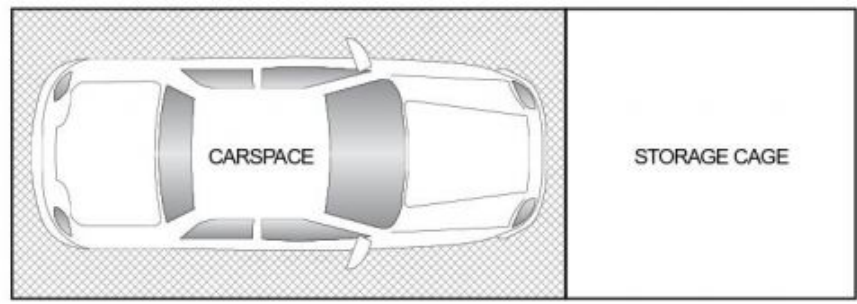
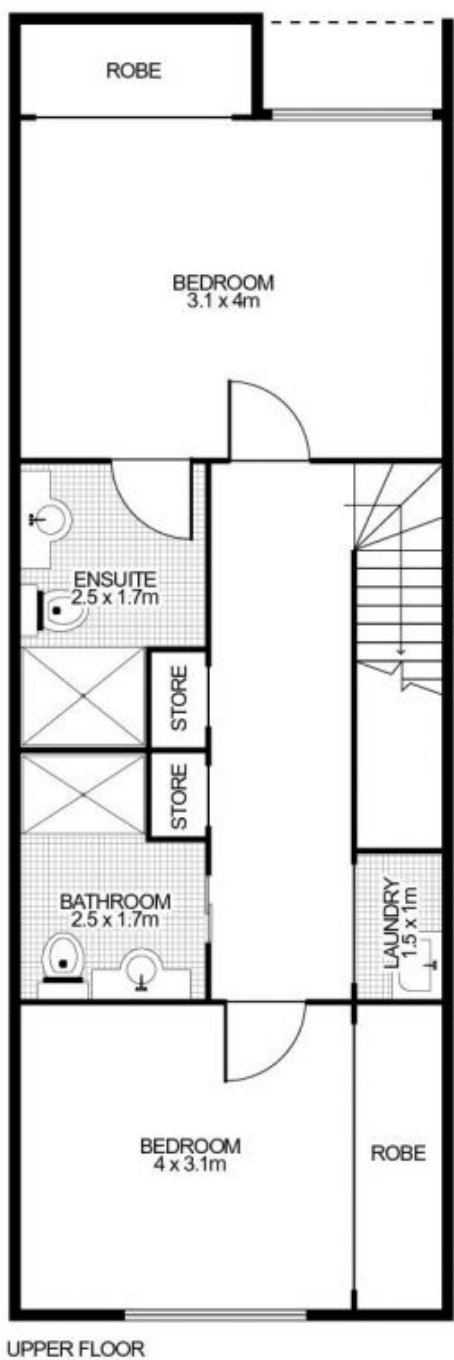
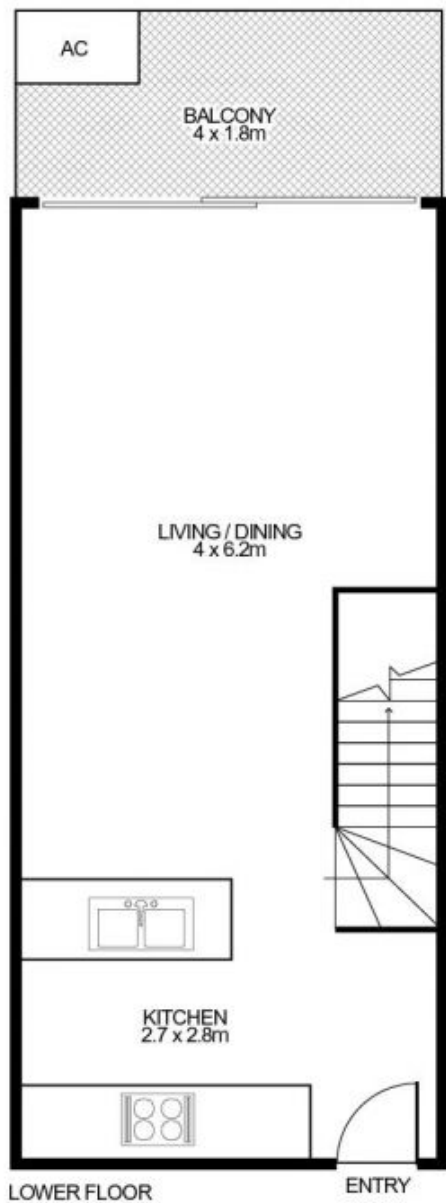
#### Agent

**Sarah Fowell**

 0437 492 129

 sarah@morton.com.au

[morton.com.au](http://morton.com.au)



212/1 Wattle Crescent, PYRMONT



This floor plan is intended as a guide only. Layout dimensions are approximate only. No representations or warranties of any nature whatsoever are given or intended. Any person using this information should rely on their own enquiries. Floor Plans by SURROUNDPIX.