



morton.

Pymble W910/1 Avon Road

 2  2  1

With respect to the government's easing of restrictions around open homes but in a continuing effort to help stop the spread of COVID-19, we will conduct our scheduled open homes with social distancing and hygiene protocols in place. Our preference is to continue to offer private appointments however public inspections will be available for some properties. Please contact the listing agent for more information

View

As advertised or by appointment

Agent

Sarah Fowell

 0437 492 129

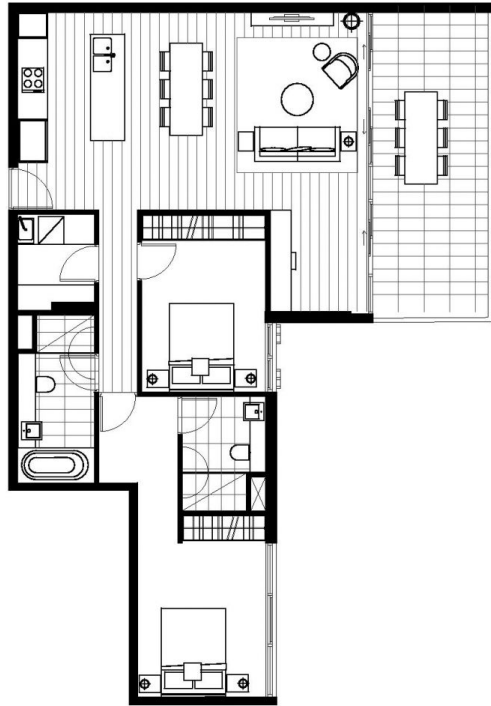
 rentals@morton.com.au

This spacious near new apartment has the largest internal size across all two bedrooms that One Avon has to offer. Located in the centre of Sydney's leafy North Shore, in the heart of prestigious Pymble. Providing a tranquil lifestyle with Pymble train station, local schools, parklands and recreation facilities at your doorstep.

Features include:

- East facing open plan, ample natural light, bathtub included
- Kingsized master bedroom, large separated study area
- Large covered balcony with leafy outlook and garden views

morton.com.au



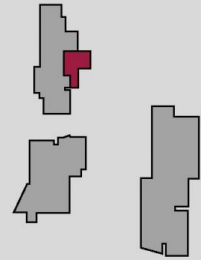
DISCLAIMER: The particulars are set out as a general outline for the guidance of intending purchasers and do not constitute an offer or contract. All descriptions, dimensions, references to conditions and necessary permissions for use and other details are given in good faith and are believed to be correct, but any intending purchasers should not rely on them as statements or representations of fact, but must satisfy themselves by inspection or otherwise to the correctness of each item, and where necessary seek advice. No third party supplier or their agents has any authority to make or give any representations or warranty in relation to this property. Plans are indicative only. Areas are subject to final survey. Completed apartments may vary from the plans shown.

WARATAH

Unit W8.09, W9.10

2 Bedroom
2 Bathroom

INTERNAL AREA 95m²
EXTERNAL AREA 19m²
TOTAL AREA 114m²



1800 425 949
1AVON.COM.AU

CBRE  AUSBAO