



morton.

Pyrmont 602/45 Bowman Street

 2  2  1

Located on the prized northern Pyrmont peninsula at Jackson's Landing is this bright contemporary apartment. Situated high up on level 6 of 'The Distillery', this apartment offers great open plan space and views of the harbour. Enjoy Resort Style Facilities while living in the sort after location.

- Floor to ceiling glass frames harbour and city views
- Sleek kitchen with gas cook top and dishwasher
- Stainless steel European appliances
- Main bedroom with walk in robe, en-suite and balcony access
- Available Unfurnished or fully furnished.

View

As advertised or by appointment

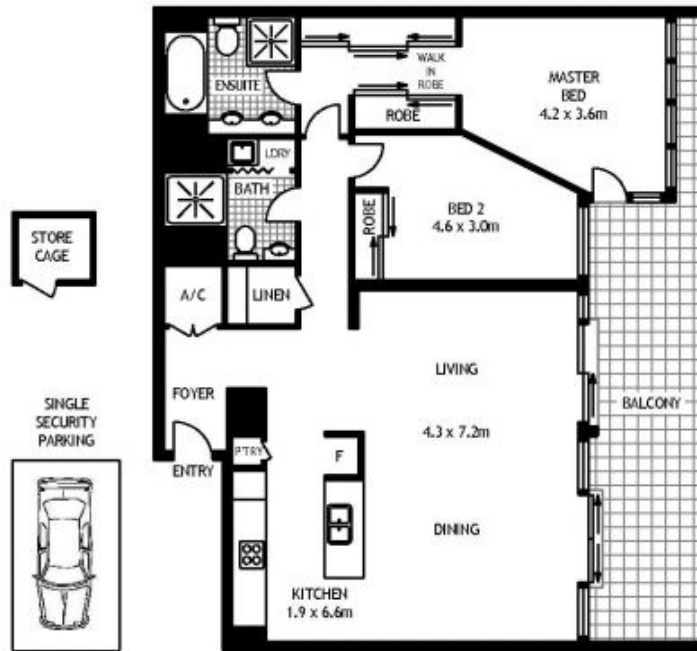
Agent

Ian Qiu

 0447 696 425

 ian@morton.com.au

morton.com.au



LEVEL SIX



602/45 BOWMAN STREET

PYRMONT

SCAPE Floor Planning Disclaimer: This floor plan is conceptual only. It is provided for illustrative purposes only and should not be relied upon. We make no guarantee to the accuracy of this plan. All interested parties should make and rely on their own enquiries in determining the accuracy of the information contained in this floor plan.