



morton.

Riverwood 114/1 Vermont Crescent

 1  1  1

With respect to the government's restrictions around open homes and to help stop the spread of COVID-19, our properties can be viewed by appointment only. Please submit an online enquiry or contact the listing agent for more information.

Located in the brand-new apartment Fairmount built by Payce in Washington Park, this 1 bedroom apartment with separate study area offers a modern design and a large courtyard.

APARTMENT FEATURES

- Reverse cycle air conditioning
- Stainless steel kitchen appliances
- Stone bench tops, mirror splash backs
- LED under cupboard lighting
- Wool carpets, efficient LED down lights
- Data/TV points in living and main bedroom
- Recessed mirrored cabinets in bathroom
- Security building, security intercom

View

As advertised or by appointment

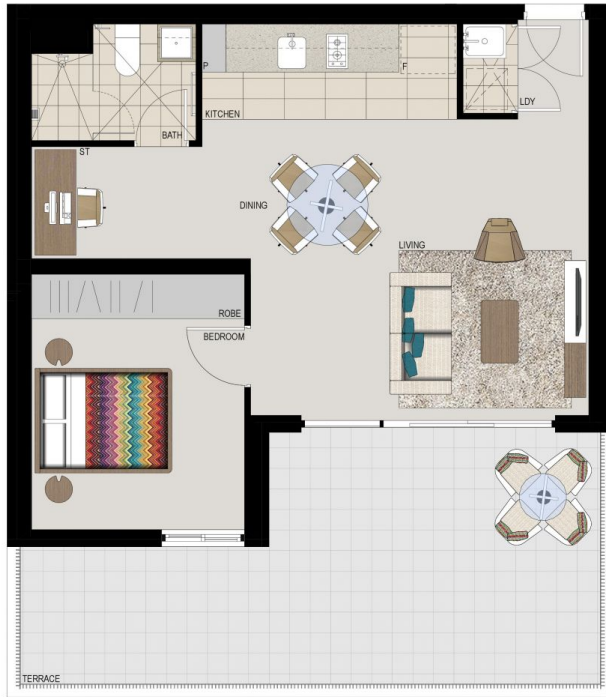
Agent

Sarah Fowell



 sarah@morton.com.au

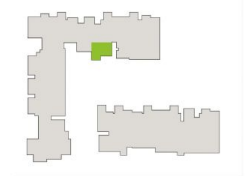
morton.com.au



**APARTMENT 114
LOT 98
1BED + STUDY**

| | |
|--------------|------------------------|
| Internal | 52m ² |
| External | 25m ² |
| Total | 77m² |

FAIRMOUNT



1300 111 088
www.washingtonpark.com.au



Disclaimer: This floor plan has been prepared for marketing purposes only. All descriptions, dimensions, depictions and other details in this floor plan may not be to scale and may vary from the property as built. Your attention is drawn to the special conditions of the contract for sale of land. No third party has any authority to make or give any representation or warranty in relation to the property unless the representation or warranty is confirmed by Payce Communities No.2 Pty Limited and included in the contract for sale of land. [Rev C. 02.08.13]

