



# morton.

Wentworth Point 312/4 Stromboli Strait

🛏 2 🚿 2 🚗 2

With respect to the government's easing of restrictions around open homes but in a continuing effort to help stop the spread of COVID-19, we will conduct our scheduled open homes with social distancing and hygiene protocols in place. Our preference is to continue to offer private appointments however public inspections will be available for some properties. Please contact the listing agent for more information

### View

As advertised or by appointment

### Agent

**Sarah Fowell**

📞 0437 492 129

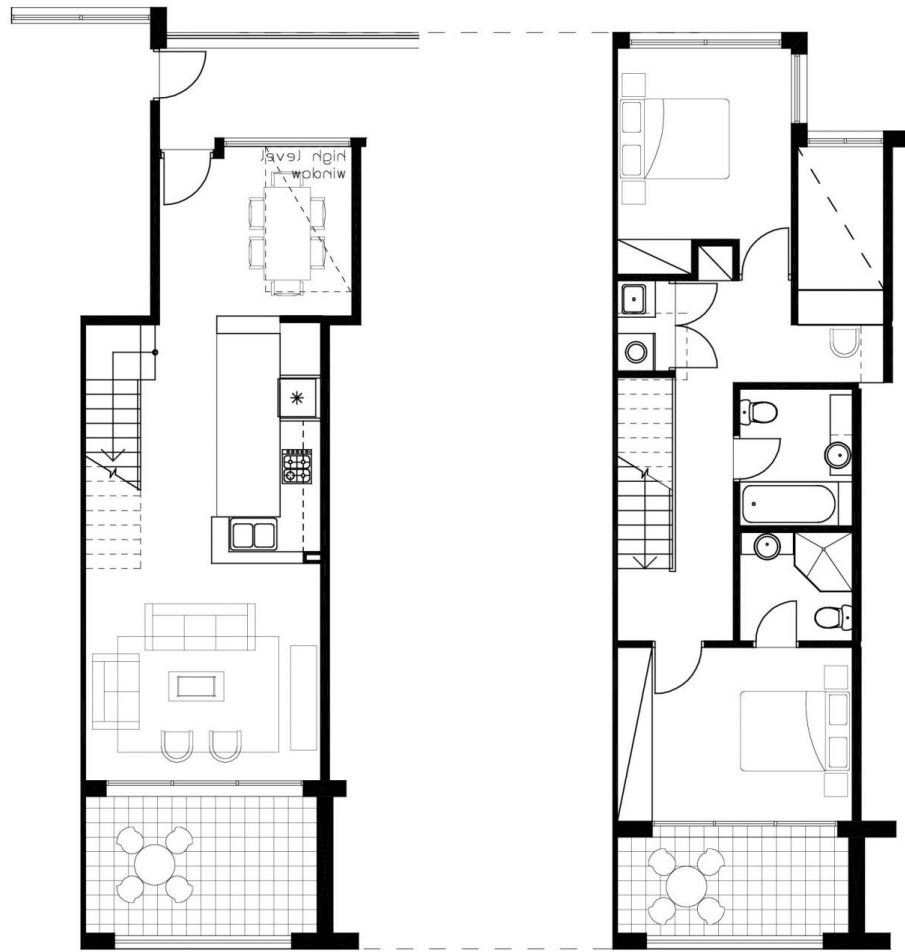
✉ rentals@morton.com.au

Situated in the 'Torino' building is this wonderful split-level apartment. Offering the perception of a resort lifestyle. This bright and light split level unit is located within minutes to public transport, Sydney Olympic Stadium and step down to the Piazza and Pulse club.

### FEATURING

- Two good sized bedrooms both with built in robes, main with en-suite
- Two good size balconies

[morton.com.au](http://morton.com.au)



LEVEL 3

LEVEL 4



"The information contained herein is intended as an introduction to the general content of the project and is subject to variation. Interested parties should rely on their own enquiries and the contract for sale. The developer reserves the right to vary from these descriptions as it deems necessary or as any relevant authority may require."



2 BEDROOM

UNIT 312

TYPE L

INTERNAL AREA 92 sqm

OUTDOOR AREA 19 sqm

TOTAL AREA 111 sqm

TORINO