



morton.

Pyrmont A502/24 Point Street

 2  2  2

With respect to the government's restrictions around open homes and to help stop the spread of COVID-19, our properties will be open by appointment only. Please contact the listing agent for more information.

The spectacular surrounds of the Sydney skyline, Barangaroo and the Harbour Bridge from a dazzling backdrop to this light filled executive apartment. Stylish in its design and generous in its layout, it offers the ultimate city-edge lifestyle with flowing interiors, quality finishes and a user-friendly oversized floor plan. The prestige Watermark complex is renowned for its superb facilities and great position close to the light rail and Darling Harbour's renowned cafes and restaurants.

- Prized north-east position with spectacular 270-degree views
- Wraparound terrace with concertina sliding doors
- Sleek stone kitchen fitted with quality gas appliances
- Double bedrooms include a master with walk-in and ensuite
- Secure under cover side by side parking for two cars
- Ducted air-conditioning, intercom entrance and storage



morton.com.au

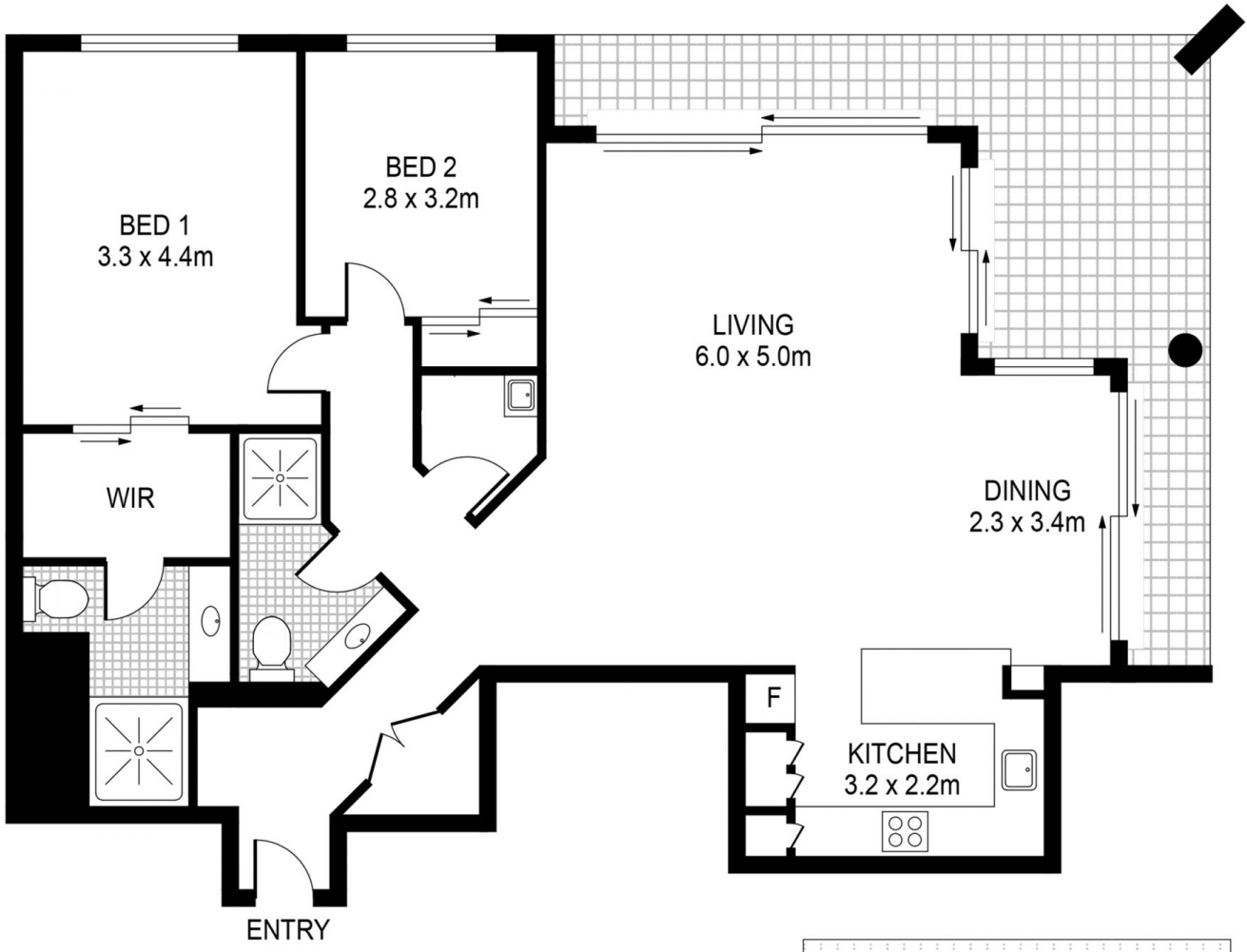
View

As advertised or by appointment

Agent

Sarah Fowell

 0437 492 129
 sarah@morton.com.au



STORAGE

