



morton.

Surry Hills 731/20 Pelican Street

 2  2  1

With respect to the government's easing of restrictions around open homes, but in a continuing effort to help stop the spread of COVID-19, we will conduct our scheduled open homes and onsite auctions with social distancing and hygiene protocols in place. We will also continue to offer private appointments and our auctions online for those who prefer that method. Please contact the listing agent for more information.

View

As advertised or by appointment

Agent

Ettiene West

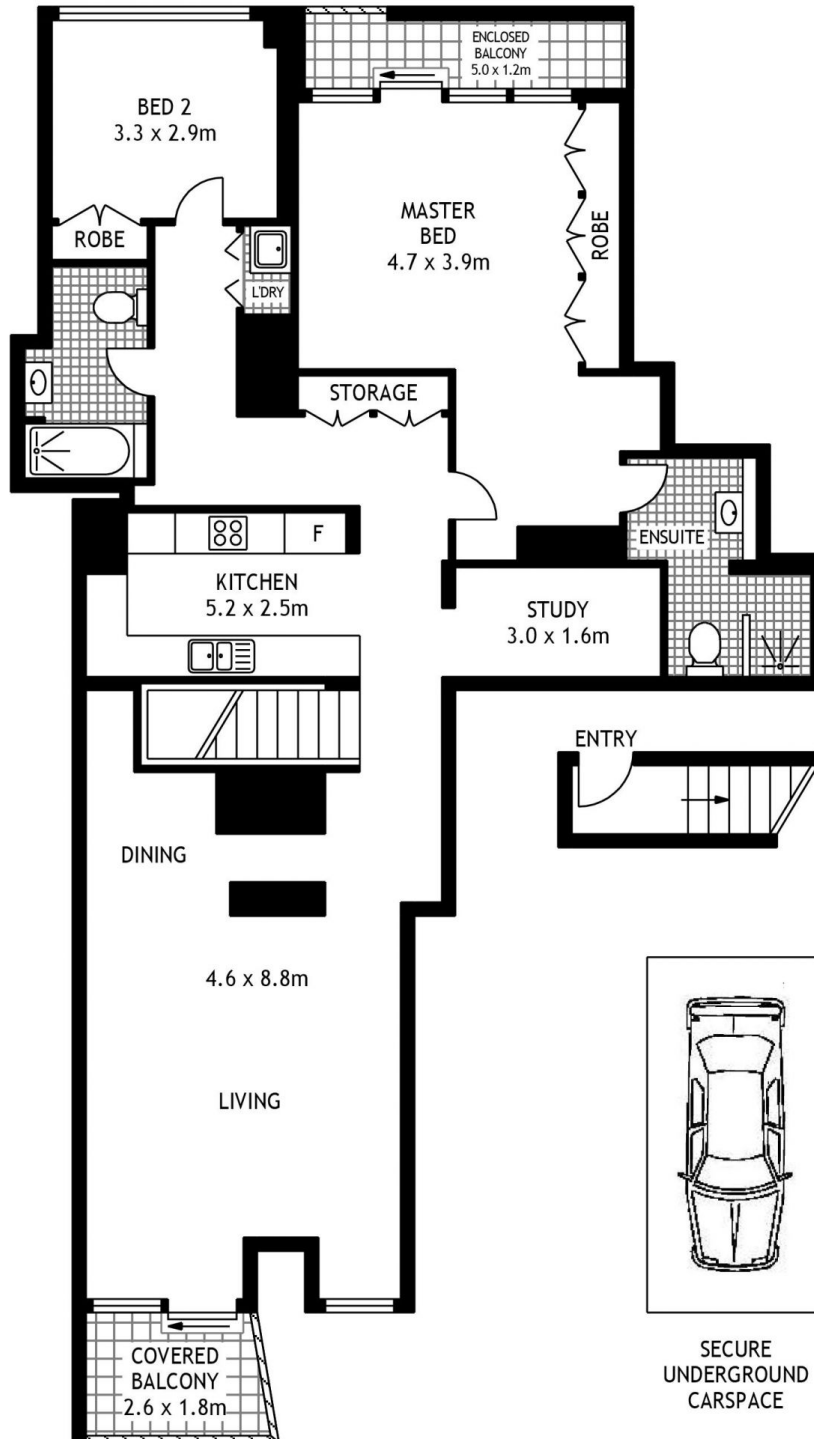
 0410 593 749

 ettiene@morton.com.au

A stunning easy-living sanctuary brilliantly appointed for bespoke inner-city enjoyment, this outstanding 'Monument' residence displays a creative vision with luxury finishes throughout. Crisp, contemporary and featuring a great sense of privacy, it captures the essence of glamorous Hollywood with generous proportions adorned with individually sourced fixtures and fittings.

- A flowing floorplan featuring 130sqm of living space
- North facing balcony that captures a bright outlook over Monument Gardens
- Benefit from a separate spacious study area

morton.com.au



731/20 PELICAN STREET

SURRY HILLS

SCAPE Floor Planing Disclaimer: This floor plan is conceptual only. It is provided for illustrative purposes only and should not be relied upon. We make no guarantee as to the correctness of this plan. All interested parties should make and rely on their own enquiries in determining the accuracy of the information contained in this floor plan.