



# morton.

**Pyrmont** 1503/50 Murray Street

 3  2  2

### View

As advertised or by appointment

### Agent

**James Crow**

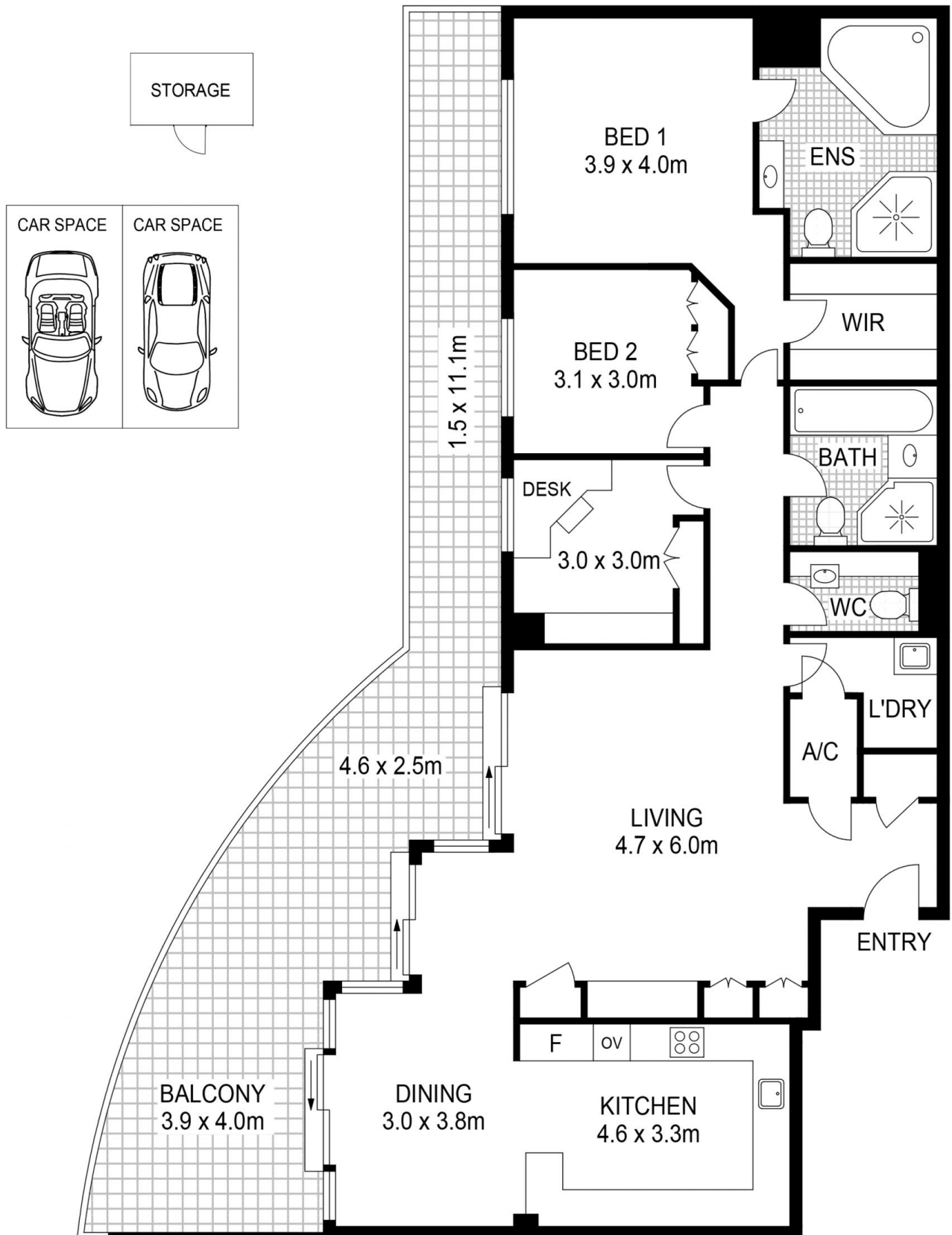
 0410 593 057

 james@morton.com.au

Architecturally designed to emulate a window to the world, this unique 3 bedroom sub-penthouse apartment at the eminent One Darling Harbour building boasts dazzling panoramic views over Sydney Harbour and Cockle Bay. Generous home-like proportions, immaculately presented interiors and 5 star resort facilities ensure a desirable city lifestyle within Sydney's most vibrant harbour-side precinct.

- Coveted 15th floor corner apartment, with a sunlit east facing 187 sqm layout
- Palatial open plan lounge and dining featuring floor-to-ceiling windows
- Enormous balcony perfectly placed for spectacular harbour and city views
- Gourmet kitchen, granite benchtops, stainless European appliances
- Spacious bedrooms, all with built-ins and balcony access
- Master bedroom ensuite, walk in dressing, separate spa bath and shower
- Well appointed main bathroom and additional guest powder

[morton.com.au](http://morton.com.au)



PLANS SHOWN ONLY INDICATIVE OF LAYOUT. DIMENSIONS ARE APPROXIMATE.



**PYRMONT** 1503/50 Murray Street

**morton.**