



# morton.

**Rosebery** F210/34 Rothschild Avenue

 2  2  1

With respect to the government's restrictions around open homes and to help stop the spread of COVID-19, our properties can be viewed by appointment only. Please contact the listing agent for more information.

Set on the rear corner of the building this impressive near new apartment provides a tranquil retreat. Part of the 'Otto' community, it displays superb architectural style with a well laid out floorplan delivering the ultimate in comfort within beautiful surrounds.

- Option to lease it unfurnished also available
- Ground floor setting within spacious outdoor area
- Clean lines, high ceilings and a free flowing design combine to create stunning living spaces
- The generous living, dining and gourmet gas kitchen
- Exceptional quality on display evidenced in the stone kitchen with its island bench, stainless appliances and mirrored splashback
- Comfortable bedrooms are well proportioned both boasting

[morton.com.au](http://morton.com.au)

### View

As advertised or by appointment

### Agent

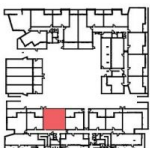
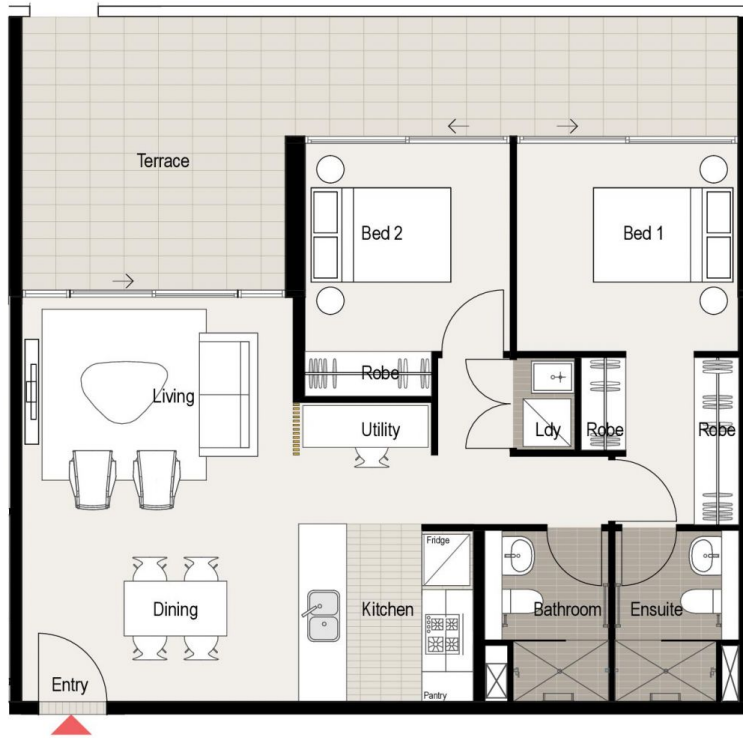
**Sarah Fowell**

 0437 492 129

 [sarah@morton.com.au](mailto:sarah@morton.com.au)

# 2 BEDROOM Apt. F.2.10

Internal Area: 76sqm  
External Area: 28sqm  
Total Area: 104sqm



Level UG

Rev\_B Date: 7/05/13



**OTROSEBERY**  
MINUTES TO EVERYWHERE

26-56 Rothschild Avenue Rosebery