



morton.

Penrith 403/60 Lord Sheffield Circuit

 2  2  1

With respect to the government's restrictions around open homes and to help stop the spread of COVID-19, our properties can be viewed by appointment only. Please contact the listing agent for more information.

Wildwood Apartments within Sheffield Quarter is a brand new apartment development located on the north side of Penrith train station situated in the highly sought after master-planned community Thornton Estate. With uninterrupted park and district views, plus water views towards the picturesque Blue Mountains, offering convenient apartment living only metres to Penrith train station, Westfield shopping centre, local parks and quality restaurants and cafes.

***Please note, the photos used in this advertisement are general images of the development and may not be indicative of the actual apartment.

Professional photos to be taken soon.

View

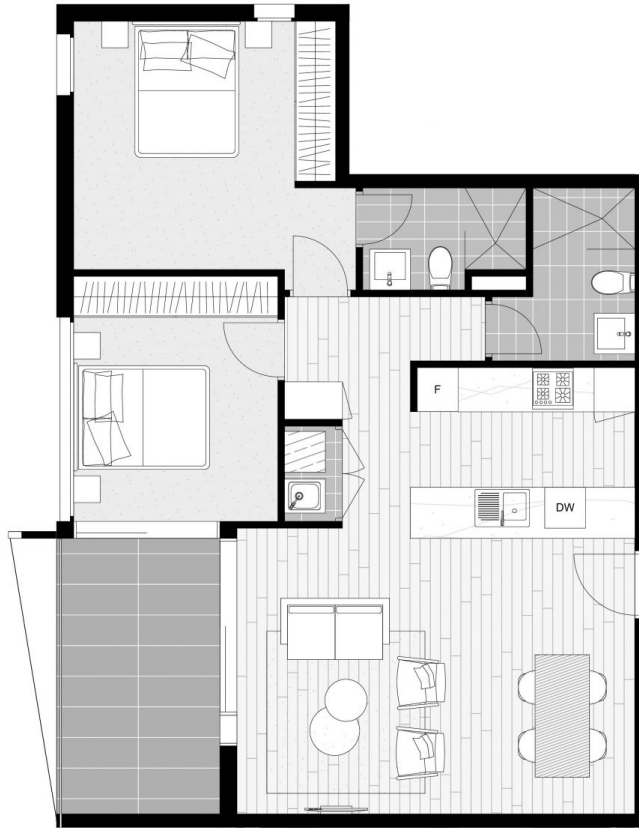
As advertised or by appointment

Agent

Morton RE

 [rentals@morton.com.au](tel:)
 rentals@morton.com.au

morton.com.au



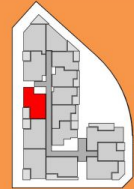
SHEFFIELD QUARTER

THORNTON

TWO BEDROOM APARTMENT

UNIT 2.03 LOT 25
 UNIT 3.03 LOT 40
 UNIT 4.03 LOT 55
 UNIT 5.03 LOT 70

INTERNAL AREA:	75 m ²
EXTERNAL AREA:	10 m ²
TOTAL:	85 m ²
PARKING:	1



URBAN CBRE



All apartments subject to contract and availability. Images showing the building, interiors and views are computer generated prior to construction and indicative only. Dimensions, layout, finishes and specifications are subject to change and may differ from those shown. Views differ between apartments. Ground floor retail not yet confirmed. Furniture and plantings are for decorative purposes and are not included.