



morton.

Pyrmont 37/80 Fig Street

 2  2  2

With respect to the government's restrictions around open homes and to help stop the spread of COVID-19, our properties can be viewed by appointment only. Please contact the listing agent for more information.

VIDEO TOUR: <https://youtu.be/Auovn-3fBgl>

A sophisticated lifestyle offering of unsurpassed quality, this exceptional residence is one of only 4 penthouses in an ultra exclusive community. Opening to capture views that stretch across Wentworth Park to the Anzac Bridge, the immaculate interiors are beautifully appointed for contemporary living.

- Well configured throughout with a versatile floorplan
- Spacious with open plan lounge and dining areas
- Designed for effortless indoor/outdoor entertaining
- Master bedroom is complete with luxurious ensuite
- Deluxe CaesarStone kitchen, stainless Miele appliances
- Vast barbecue terrace with Stainless BBQ
- Remote exterior awning and interior blinds

morton.com.au

View

As advertised or by appointment

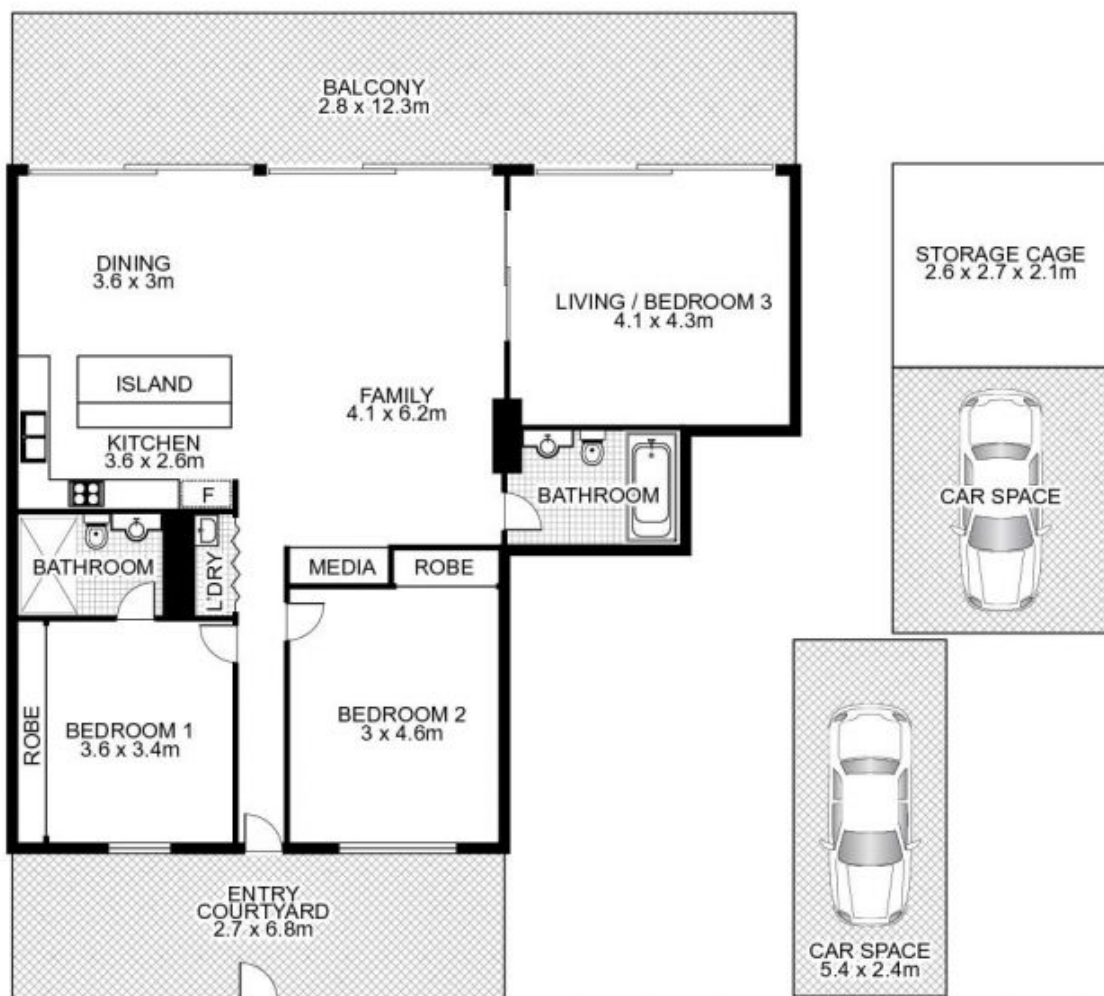
Agent

Morton



 info@morton.com.au

37/80 Fig Street, PYRMONT



Plans by
surroundpix
com.au
1300 30 32 40

This floor plan is intended as a guide only. Layout dimension are approximate only. No representation or warranties of any nature whatsoever are given or intended. Any person using this information should rely on their own enquiries.