



Your wellbeing
is our #1 priority

morton.



morton.

Kingswood 206C/48-56 Derby Street

3 2 2

With respect to the government's restrictions around open homes and to help stop the spread of COVID-19, our properties can be viewed by appointment only. Please contact the listing agent for more information.

Alternative, please click the link below to view a video tour of this property
<https://youtu.be/bvd5qgWqWFE>

Conveniently located in the brand new Omega Apartment development (entry via Foyer C), this unfurnished stylish and spacious as new three-bedroom apartment has quality finishes and is ideal for the busy professional, close to all the amenities required, including being across the road from the upgraded Nepean Hospital and a 12-minute walk to Kingswood train station.

- Light-filled south-west facing with a large balcony and leafy outlook
- Carpeted throughout the open living/dining & reverse-cycle

[morton.com.au](https://www.morton.com.au)

View

As advertised or by appointment

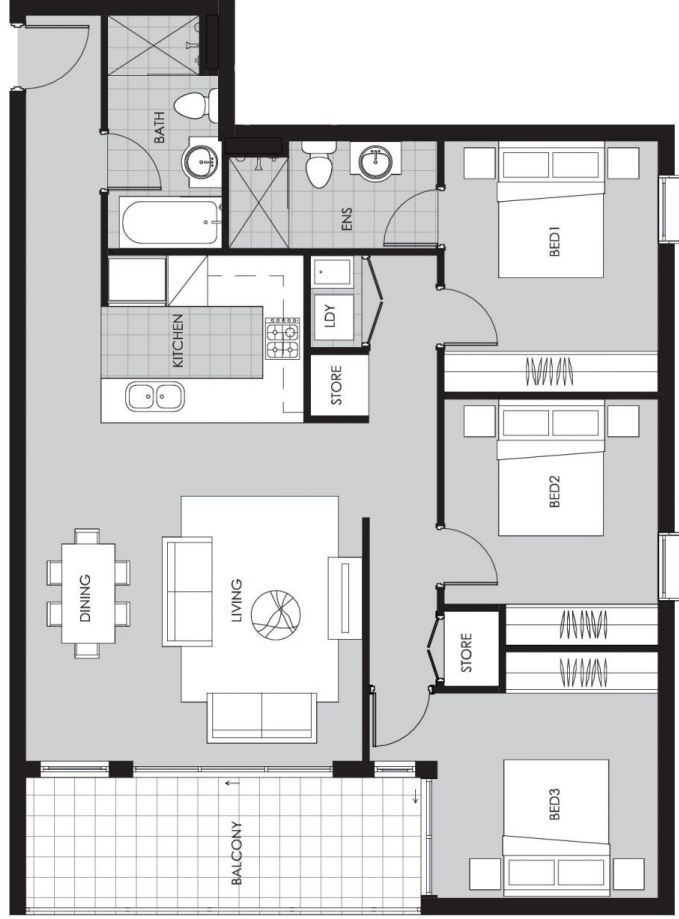
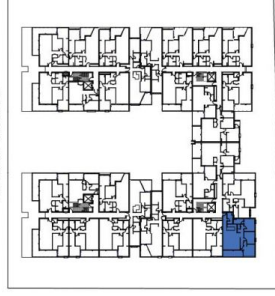
Agent

Morton RE

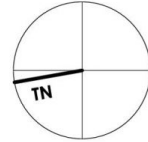
rentals@morton.com.au

Unit C206

DERBY STREET



Internal = 95m²
Balcony = 12m²
Carspace = 2
Storage
-In Unit
-in Basement



Skyton Developments do not guarantee, warrant or represent that the information contained in this advertising and marketing document is correct. Any interested parties should make their own enquires as to the accuracy of the information. We exclude all implied or implied terms, conditions and warranties arising from this document and any liability for loss or damage arising there from.

1:100 @ A4

Level 2 - Unit C206

48-56 Derby Street K I N G S W O O D