



# morton.

Sydney 260/398 Pitt Street Street

🛏 2 🚿 1 🚗 1

With respect to the government's restrictions around open homes and to help stop the spread of COVID-19, our properties can be viewed by appointment only. Please contact the listing agent for more information.

Conveniently placed within a short and easy stroll to a wealth of culinary and shopping amenities, this smart and stylish residence embodies effortless low maintenance living. Impeccably finished with nothing to add, this ultra contemporary home occupies a stunning sub-penthouse position.

- Welcoming open entertaining areas flow to a sunroom / enclosed balcony
- Timber floors
- Open kitchen, electric appliances, free flowing layout
- With a concierge, indoor heated pool and gymnasium
- Sauna, spa, squash court, large garage with storage
- Ducted air conditioning
- Situated high on level 37

### View

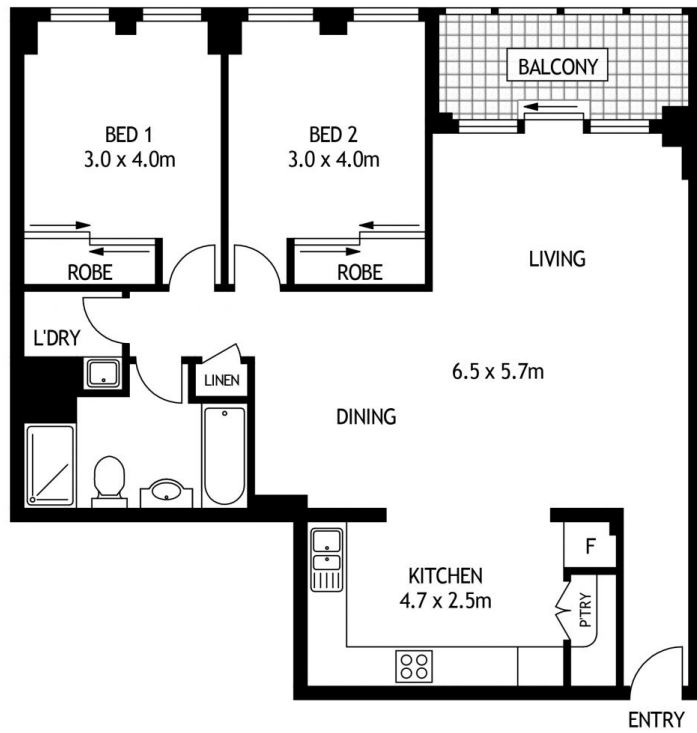
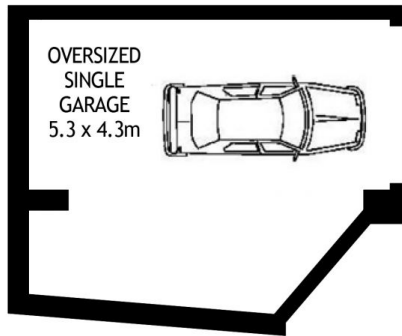
As advertised or by appointment

### Agent

#### Morton

📞 info@morton.com.au

[morton.com.au](http://morton.com.au)



**THIRTY SEVENTH FLOOR**

260/398 PITT STREET

SYDNEY

SCAPE Floor Planing Disclaimer: This floor plan is conceptual only, it is provided for illustrative purposes only and should not be relied upon. We make no guarantees to the correctness of this plan. All interested parties should make and rely on their own enquiries in determining the accuracy of the information contained in this floor plan.