



morton.

Pyrmont A502/24 Point Street

🛏 2 🚗 2 🚗 2

The spectacular surrounds of the Sydney skyline, Barangaroo and the Harbour Bridge from a dazzling backdrop to this light filled executive apartment. Stylish in its design and generous in its layout, it offers the ultimate city-edge lifestyle with flowing interiors, quality finishes and a user-friendly oversized floor plan. The prestige Watermark complex is renowned for its superb facilities and great position close to the light rail and Darling Harbour's renowned cafes and restaurants.

- Prized north-east position with spectacular 270-degree views
- Wraparound terrace with concertina sliding doors
- Sleek stone kitchen fitted with quality gas appliances
- Double bedrooms include a master with walk-in and ensuite
- Secure under cover side by side parking for two cars
- Ducted air-conditioning, intercom entrance and storage
- Full walk in laundry with shelving and tub
- Onsite resort facilities include a 25m swimming pool and gym

View

As advertised or by appointment

Agents

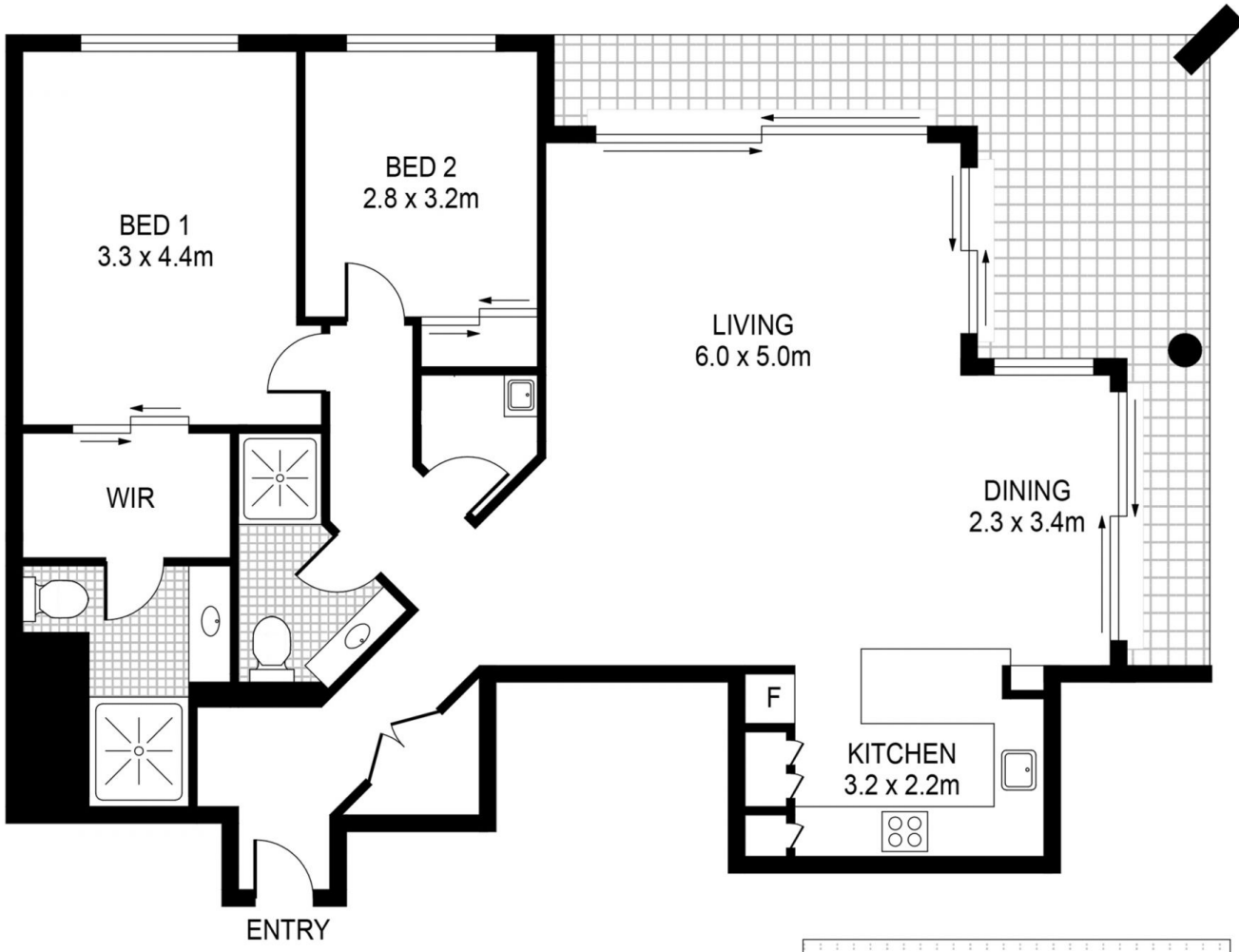
James Crow

📞 0410 593 057
 ✉ james@morton.com.au

Sarah Li

📞 0439 528 933
 ✉ sarahli@morton.com.au

morton.com.au



STORAGE

