



morton.

Wentworth Point 117/3 Stromboli Strait

 2  2  2

The Waterfront is located moments to Sydney Olympic Park main venues, train station, Bicentennial Park and Millennium Parklands. Located in Napoli, this is your opportunity to move into this 2 bedroom apartment with courtyard and backyard, only a short stroll from The Promenade and The Piazza.

- Ground floor apartment with direct street access
- Dual courtyard
- Tiled throughout
- Combined living and dining rooms
- Air conditioning in the lounge room
- Natural ventilation throughout the unit
- Gas cooking and quality finishes throughout
- Good size bedrooms with built-in wardrobes
- Laundry room and clothes dryer
- Double car space
- No pets allowed

View

As advertised or by appointment

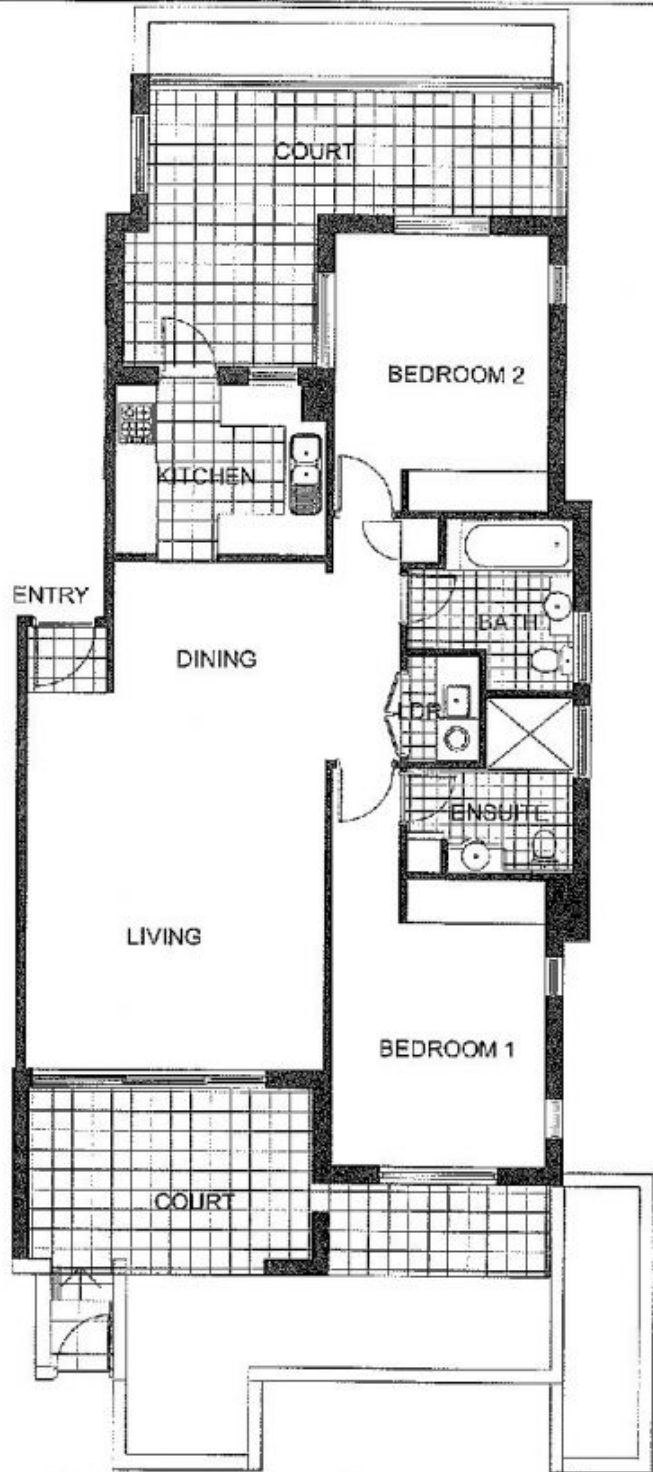
Agent

Sarah Fowell

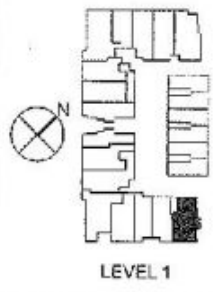
 0437 492 129

 rentals@morton.com.au

morton.com.au



"The information contained herein is intended as an introduction to the general content of the project and is subject to variation. Interested parties should rely on their own enquiries and the contract for sale. The developer reserves the right to vary from these descriptions as it deems necessary or as any relevant authority may require."



LEVEL 1

THE WATERFRONT
AT HOME BURNHAY

2 BEDROOM	APARTMENT 117	TYPE D
INTERNAL AREA 91 sqm	OUTDOOR AREA INCL. PLANTER 59 sqm	TOTAL AREA 150 sqm
		NAPOLI