



morton.

Sydney 3603/91 Liverpool Street



With respect to the government's easing of restrictions around open homes but in a continuing effort to help stop the spread of COVID-19, we will conduct our scheduled open homes with social distancing and hygiene protocols in place, as well as continue to offer private appointments for those who prefer that method.

Please contact the listing agent for more information.

This stunning practical home boasts practicality and functionality. Situated in World Tower in the heart of Sydney CBD, enjoy convenience of inner-city living coupled with the comfort of first-class facilities. Proximity to Town Hall, Hyde Park, Darling harbour and the newly completed light rail combined with shopping, restaurants and cafes at your doorstep makes this the perfect option for any owner occupier or savvy investor.

- Spacious bedroom with built-in, combined living & dining
- Extra space provides versatile use such as added dining or study

morton.com.au

View

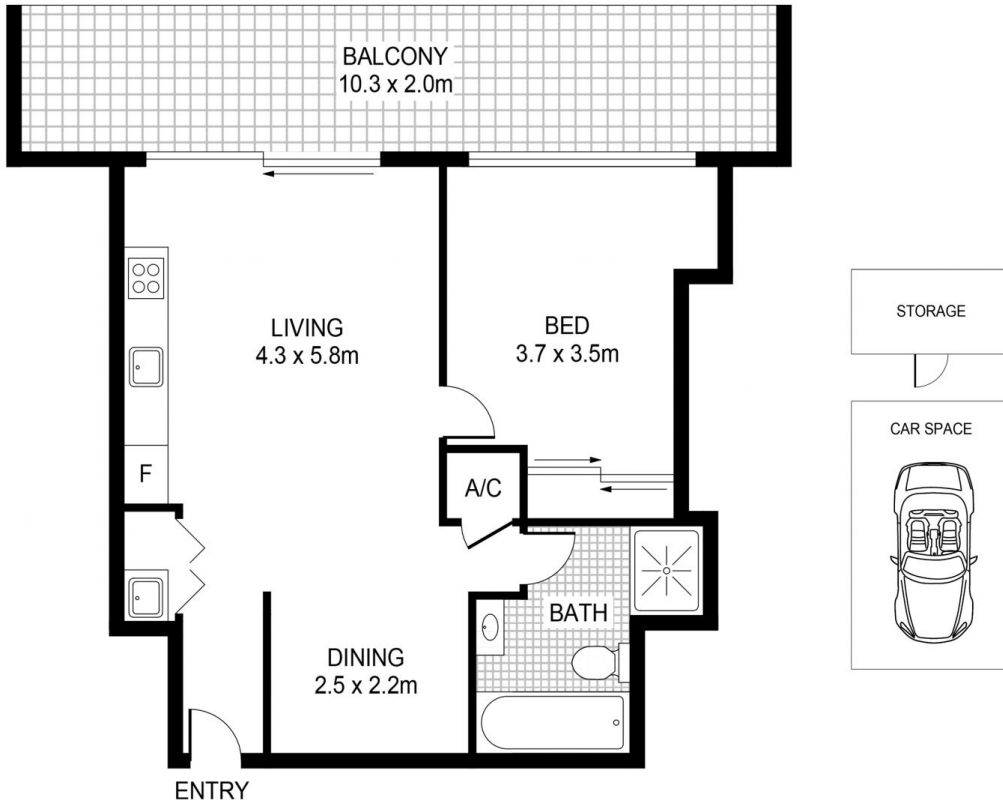
As advertised or by appointment

Agent

Ettiene West

📞 0410 593 749

✉️ ettiene@morton.com.au



This floor plan including furniture, fixture measurements and dimensions are approximate and for illustrative purposes only.



SYDNEY 3603/91 Liverpool Street

morton.