



morton.

Macquarie Park B1205/23-27 Halifax Street

2
 2
 1

Great opportunity to lease this split level two-bedroom apartment with stunning views in Hideaway building, NBH at Lachlan's Line. This iconic development perfectly positioned above a bustling town square at the heart of the new Lachlan's Line master plan.

- Generous open plan lounge, timber floorboards throughout
- Large entertainer's balcony with magnificent views
- Split level design, powder room downstairs with the third toilet
- Quality designer kitchen with Miele gas appliances
- Bedrooms with built-in robe, abundance of light and views
- Sleek bathroom has floor to ceiling tiles, mirrored vanity cabinets
- One car space and storage cage, security access
- Video intercom, laundry with dryer, air-conditioning, NBN internet
- Lush landscaped gardens, pool, gym & BBQ, onsite building manager-
- Pets considered upon application

View

As advertised or by appointment

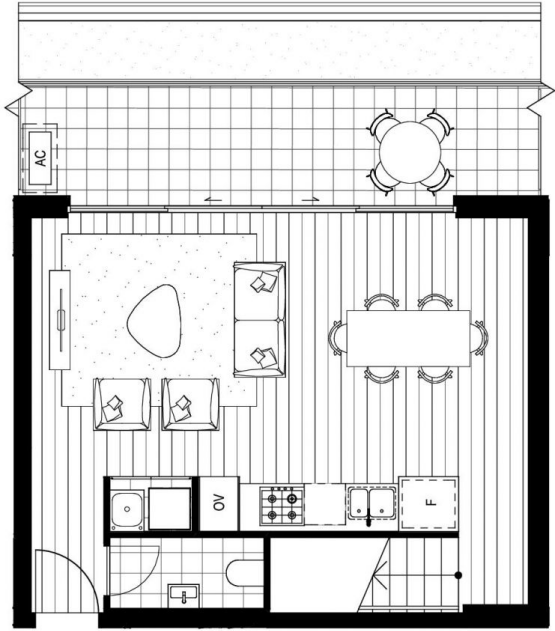
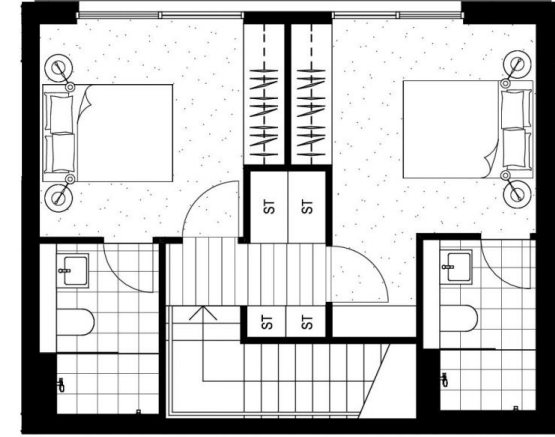
Agent

Sandy Shen

0410 593 246

sandy.shen@morton.com.au

morton.com.au



2B.05	
Internal Area	79-83m ²
External Area	13-17m ²
Total Area	92-100m ²
HABITAT	
12.05, 12.06	
HIDEAWAY	
12.05, 12.06	
HEARTH	
12.05, 12.06, 12.07	

