



morton.

Macquarie Park 06/23-27 Halifax Street

 2  2  1

LEASED

Great opportunity to lease this over-sized two bedroom apartment in Hideaway building, NBH at Lachlan's Line. This iconic development perfectly positioned above a bustling town square at the heart of the new Lachlan's Line master plan.

- Generous open plan lounge, timber floorboards throughout
- Quality designer kitchen with Miele gas appliances
- Huge bathroom has floor to ceiling tiles, mirrored vanity cabinets
- Spacious bedrooms with built-in, master room has walk-in robe
- One car space and large storage cage, security access
- Video intercom, laundry with dryer, air-conditioning, NBN internet
- Lush landscaped gardens, pool, gym & BBQ, onsite building manager-
- Pets considered upon application

View

As advertised or by appointment

Agent

Sandy Shen

 0410 593 246

 sandy.shen@morton.com.au

morton.com.au



nbh
AT LACHLAN'S LINE

2B.02_ADP

Internal Area 78-82m²

External Area 11-13m²

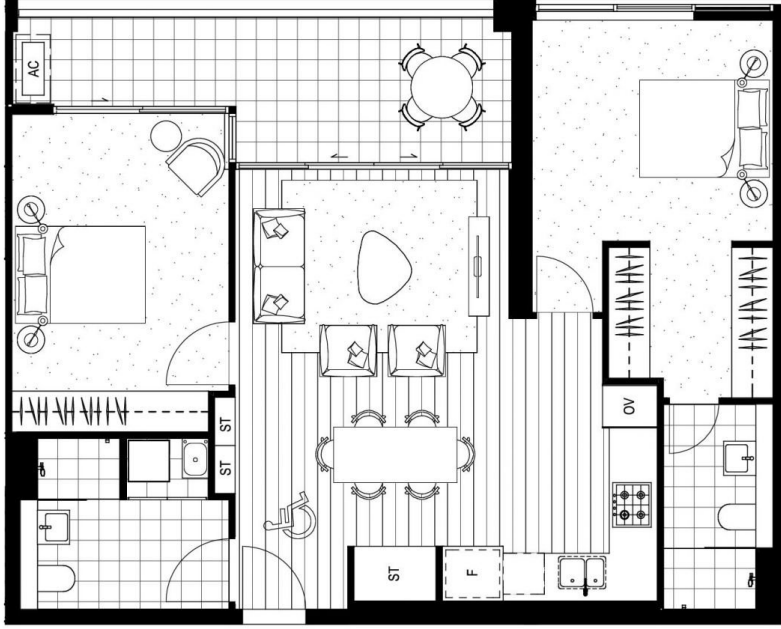
Total Area 89-95m²

HABITAT

3.05, 5.05, 6.05, 7.05, 8.05, 9.05, 10.05.

HIDEAWAY

3.05, 5.05, 6.05, 7.05, 8.05, 9.05, 10.05.



NBSYDNEY.COM 1800 388 788

REV_E_10.08.2018

Refer to General Arrangement Plans for specific unit locations, orientation and content. Note that all graphics including balustrades, glazing units, door units and the like should be taken to be indicative only. Window locations and operable window and door units are shown as minimal and are subject to change. Floor plans are at an unspecified scale. All internal and external unit areas and sizes are indicated as approximate only and are subject to final strata survey. "Views" possible window position for each individual unit. Please note that the floor plan was produced prior to construction. The information here is believed to be correct but is not guaranteed. Changes may be made during construction and dimensions, areas, fittings and specification are subject to change without notice in accordance with the provisions of the contract for sale. The furniture and furnishings depicted are not included with and sale and purchase must refer to a list of inclusions. The position of furniture and furnishings should not be taken to be indicative of final positions of power points, TV connection points and the like. Prospective purchasers must rely on their own enquiries. Balustrades for balconies are not depicted.



nbh
AT LACHLAN'S LINE

2B.02_A_ADP

Internal Area 78-82m²

External Area 11-13m²

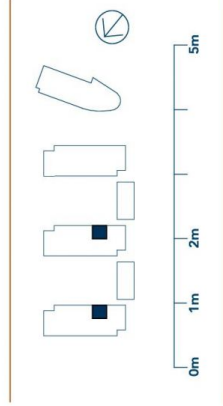
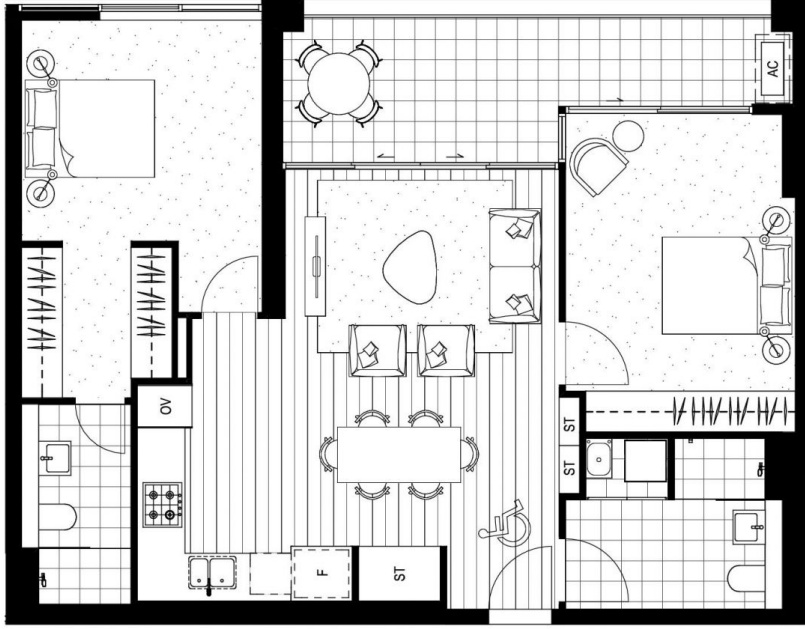
Total Area 89-95m²

HABITAT

3.06, 5.06, 6.06, 7.06, 8.06, 9.06, 10.06

HIDEAWAY

3.06, 5.06, 6.06, 7.06, 8.06, 9.06, 10.06



NBSYDNEY.COM 1800 388 788

REV_D_10.08.2018

Refer to General Arrangement Plans for specific unit locations, orientation and content. Note that all graphics including balustrades, glazing units, door units and the like should be taken to be indicative only and are subject to change. Window locations and operable window and door units are shown as minimal and are subject to change. Floor plans are at an unspecified scale. All internal and external unit areas and sizes are indicated as approximate only and are subject to final strata survey. "Areas - possible window position for each individual unit only. Refer to the General Arrangement Plans for each individual unit. Please note that the floor plan was produced prior to construction. The information here is believed to be correct but is not guaranteed. Changes may be made during construction and dimensions, areas, fittings and specification are subject to change without notice in accordance with the provisions of the contract for sale. The furniture and furnishings depicted are not included with and sale and purchase must refer to a list of inclusions. The position of furniture and furnishings should not be taken to be indicative of final positions of power points, TV connection points and the like. Prospective purchasers must rely on their own enquiries. Balustrades for balconies are not depicted.