



# morton.

**Wentworth Point** 15080/17-19 Amalfi Drive

 2  2  1

Here is your opportunity to reside in Wentworth Point's finest and latest, One The Waterfront.

One the Waterfront offers a unique luxury lifestyle with high end indoor and outdoor facilities to entertain you all year round. Located at the foot of Wentworth Point, One the Waterfront is in easy access to transport services to Rhodes, Parramatta and Circular Quay.

- Timber floor with skylight
- Open plan design with latest in décor finishes
- Quality designer kitchen with Bosch built-in appliances
- Security parking space
- Air-conditioning, video intercom entry and lift access
- Beautiful communal gardens with landscaped surrounds
- Views to the water, parklands and the CBD skylines
- Walk to restaurants, Olympic Park, Ferry Wharf and speciality stores

### View

As advertised or by appointment

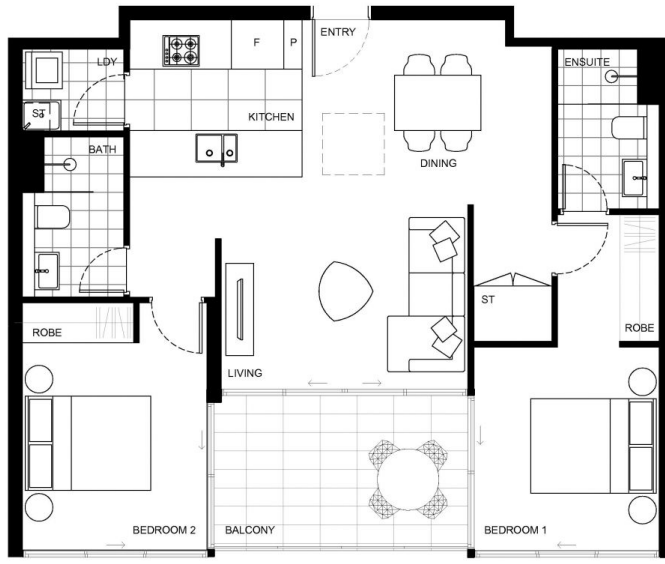
### Agent

**Morton RE**

 [rentals@morton.com.au](tel:)  
 [rentals@morton.com.au](mailto:rentals@morton.com.au)

[morton.com.au](http://morton.com.au)

BUILDING  
ONE J



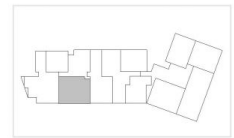
Disclaimer: This floorplan, including treatment to balcony or courtyard, is indicative only and subject to change without notice. Any dimensions and areas shown may be varied subject to detailed design and authority requirements. Areas are measured from internal face of walls and from centreline of windows.

**ONE**  
THE WATERFRONT

APARTMENT | LOT  
**15080** | **84**

2 Bed

INTERNAL 75m<sup>2</sup>  
EXTERNAL 10m<sup>2</sup>  
**TOTAL 85m<sup>2</sup>**



BUILDING ONE J LEVEL 15

1300 865 465

[onethewaterfront.com.au](http://onethewaterfront.com.au)

**PIETY**THP