



**morton.**

**Zetland** 609/15 Gadigal Avenue

 1  1

Ideally positioned in Zetland's premium 'Ruby Tower', this quality one-bedroom property represents a fantastic lifestyle or investment asset in a highly convenient location. The smartly presented apartment takes entry level buying to new levels of style and features fresh breezy interiors, a smart dual-level layout plus sweeping urban views over the surrounding area.



- Well-proportioned open design, polished floor, air-con
- Sunlit balcony that captures an elevated district view
- Modern kitchen fitted with good quality Miele appliances
- Upper level bedroom with built-in wardrobe and balcony
- Lock-up storage, lift access and secure intercom entrance
- Walk to Victoria Park cafes, dining, and Green Square trains
- Stamp duty exemptions will apply to first home purchasers

#### **View**

As advertised or by appointment

#### **Agents**

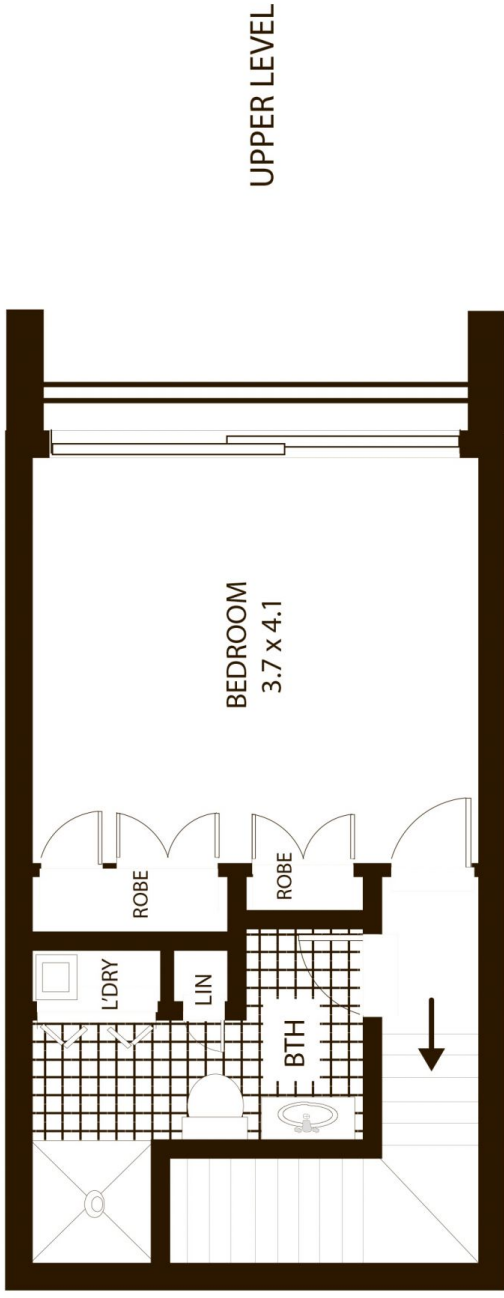
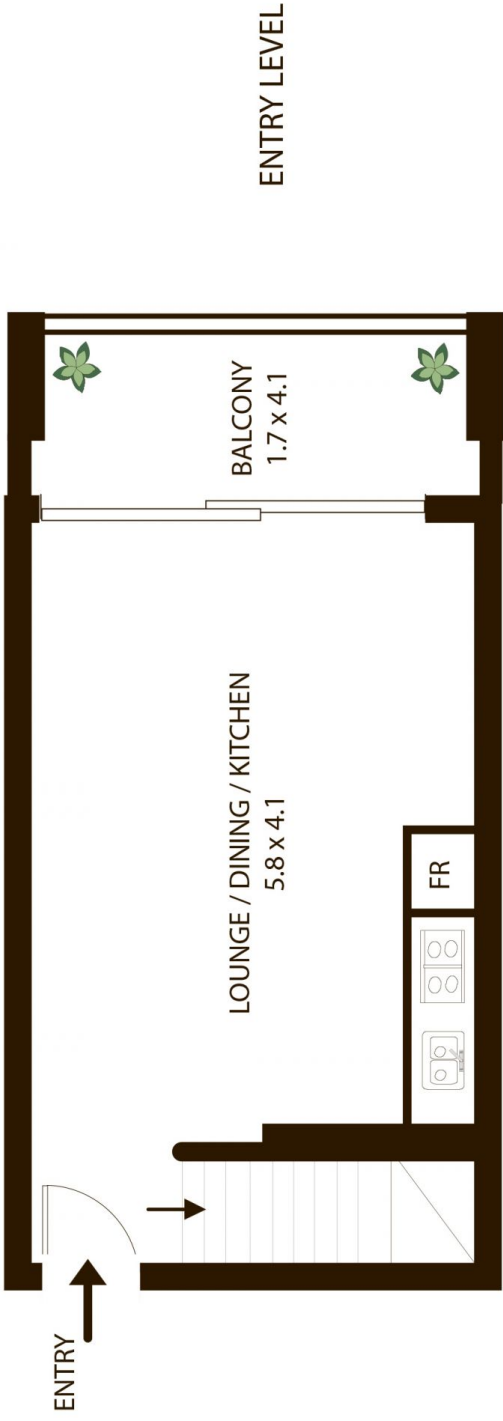
##### **Sarah Fowell**

 0437 492 129  
 sarah@morton.com.au

##### **Calvin Chan**

 0406 888 028  
 calvin@morton.com.au

**morton.com.au**



# 609/15 Gadigal Ave, Zetland

All measurements are approximate only. Plan is provided as an indication of layout