



morton.

Ermington 523/48-56 Bundarra Street

 2  2  1

Located in the new urban hub of Royal Shores, Safari offers lifestyle apartment living within the masterplanned community in Ermington. Perched on the waters edge, Safari offers easy access to the river, cycleway and parks.

APARTMENT FEATURES

- High ceiling living room with tiles
- Timber floor for both bedrooms
- Study with plenty of storage area
- Wintergarden
- Reverse cycle air conditioning
- Stainless steel kitchen appliances
- Stone bench tops, mirror splash backs
- LED under cupboard lighting
- Wool blend carpets, efficient LED down lights
- Data/TV points in living and main bedroom
- Recessed mirrored cabinets in bathroom
- Security building, video intercom

NEIGHBORHOOD FACILITIES

morton.com.au

View

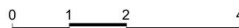
As advertised or by appointment

Agent

Nevena Petrovic

 0428 835 910

 nevena@morton.com.au



JOINTLY DEVELOPED BY



Disclaimer: This floor plan has been prepared for marketing purposes only. All descriptions, dimensions, depictions and other details in this floor plan may not be to scale and may vary from the property as built. Your attention is drawn to the special conditions of the contract for sale of land. No third party has any authority to make or give any representation or warranty in relation to the property unless the representation or warranty is confirmed by the vendors and included in the contract for sale of land. Date Issued: 05/12/14 Revision: C

SALES BY

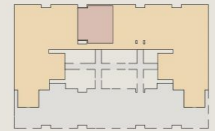


ROYAL SHORES
SYDNEY HARBOUR

SAFARI II
Ⓜ
APARTMENT 523
LOT 116

2 BEDROOM + STUDY

Internal (including All Seasons Living Room)	107 sqm
Total	107 sqm



SAFARI II - LEVEL 5

ROYAL SHORES DISPLAY CENTRE
1 Bundarra Street, Ermington NSW 2115
P 1300 888 558 W royalshores.com.au