



morton.

Pyrmont 6/9 Quarry Master Drive

 2  2  1

This unique two bedroom apartment offers comfort and tranquility in a central and exclusive neighborhood. With an over-sized living area, two bedrooms, two bathrooms and lock up garage, this apartment is the perfect choice for those looking to live among the cafes, bars, shops and parks of Pyrmont.

- Open plan living, kitchen and dining area
- Italian marble tiled kitchen bench-top, Smeg appliances
- Large master bedroom, en-suite, generous walk-in wardrobe
- Spacious second bedroom and main bathroom with bath
- Large lock-up garage in secure basement parking area
- Rooftop pool, sauna and gym in the complex

View

As advertised or by appointment

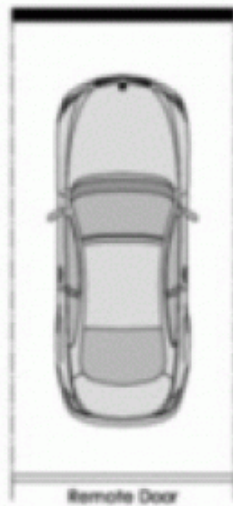
Agent

Naomie Texier

 0439 247 710

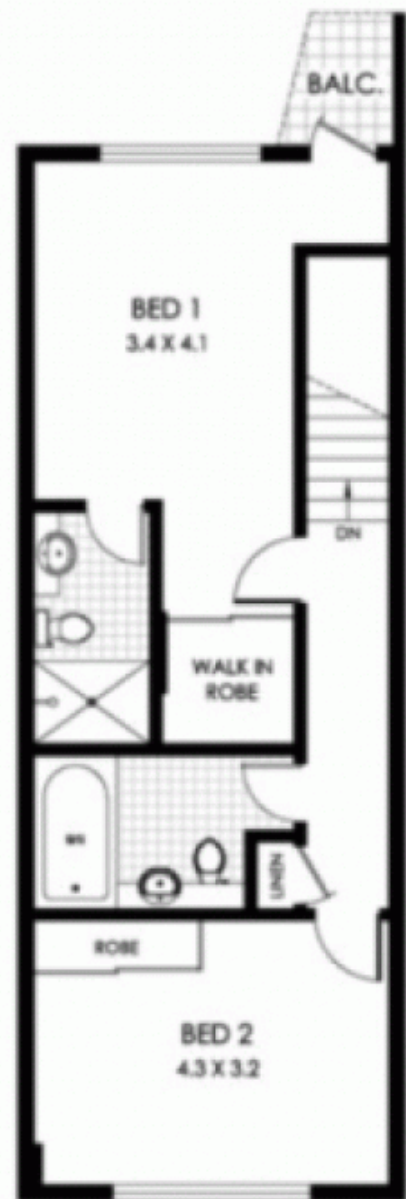
 naomie@morton.com.au

morton.com.au

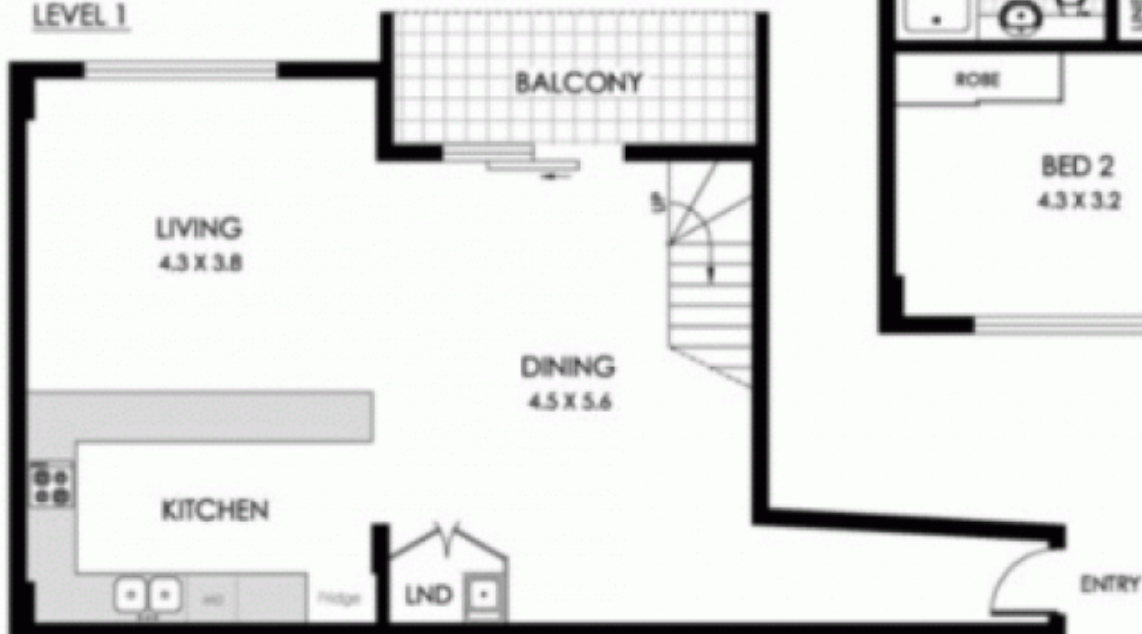


GARAGE IN
BASEMENT
SECURITY

LEVEL 2



LEVEL 1



0 1 2 3 SCALE (METRES)

PLANS SHOWN ARE ONLY INDICATIVE OF LAYOUT. DIMENSIONS ARE APPROXIMATE

All information contained herein is gathered from sources we believe to be reliable, however we cannot guarantee its accuracy and interested persons should rely on their own enquiries. Dimensions are approximate.



6/9 QUARRY MASTER DRIVE

PYRMONT
Apartment Size: 113m²