



# morton.

**Penrith** 405/60 Lord Sheffield Circuit

 2  2  1

Wildwood Apartments within Sheffield Quarter is a brand new apartment development located on the north side of Penrith train station situated in the highly sought after master-planned community Thornton Estate. With uninterrupted park and district views, plus water views towards the picturesque Blue Mountains, offering convenient apartment living only metres to Penrith train station, Westfield shopping centre, local parks and quality restaurants and cafes.

- Positioned on the south-west corner of the building with a distinctive exterior façade overlooking the water canal and the cricket oval, these are some of the best views you will find in Thornton.
- Large 80 sqm internal light-filled open living area with contemporary design and quality finishes, including timber floorboards, reverse-cycle air-conditioning, plus an 11 sqm covered entertainers balcony on level 4.
- Eat-in kitchen with stone benchtops, gas cooktop and stainless steel appliances, vertical splashback subway tiles and bold and sophisticated finishes exude style and elegance.

### View

As advertised or by appointment

### Agent

**Amy Torbarina**

 0438 977 172

 amy@morton.com.au

[morton.com.au](https://www.morton.com.au)



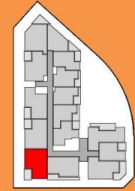
# SHEFFIELD QUARTER

THORNTON

## TWO BEDROOM + STUDY APARTMENT

UNIT 2.05 LOT 27  
 UNIT 3.05 LOT 42  
 UNIT 4.05 LOT 57  
 UNIT 5.05 LOT 72

INTERNAL AREA:	80 m <sup>2</sup>
EXTERNAL AREA:	11 m <sup>2</sup>
TOTAL:	91 m <sup>2</sup>
PARKING:	1



**URBAN CBRE**



All apartments subject to contract and availability. Images showing the building, interiors and views are computer generated prior to construction and indicative only. Dimensions, layouts, finishes and specifications are subject to change and may differ from those shown. Views differ between apartments. Ground floor retail not yet confirmed. Furniture and plantings are for decorative purposes and are not included.