



morton.

Wentworth Point 310/3 The Piazza

 2  2  1

The Waterfront is located moments to Sydney Olympic Park main venues, train station, Bicentennial Park and Millennium Parklands. Located in Portofino, this is your opportunity to move into this one bedroom apartment only a short stroll from The Promenade and The Piazza.

- Full sized kitchen with stainless steel appliances with dishwasher
- Separate Lounge and dining area
- Two bedrooms with built-ins
- Spacious main bedroom with en-suite
- Laundry room and clothes dryer
- Secure undercover car space
- Balcony overlooking Tennis Courts
- Brand new carpets throughout

View

As advertised or by appointment

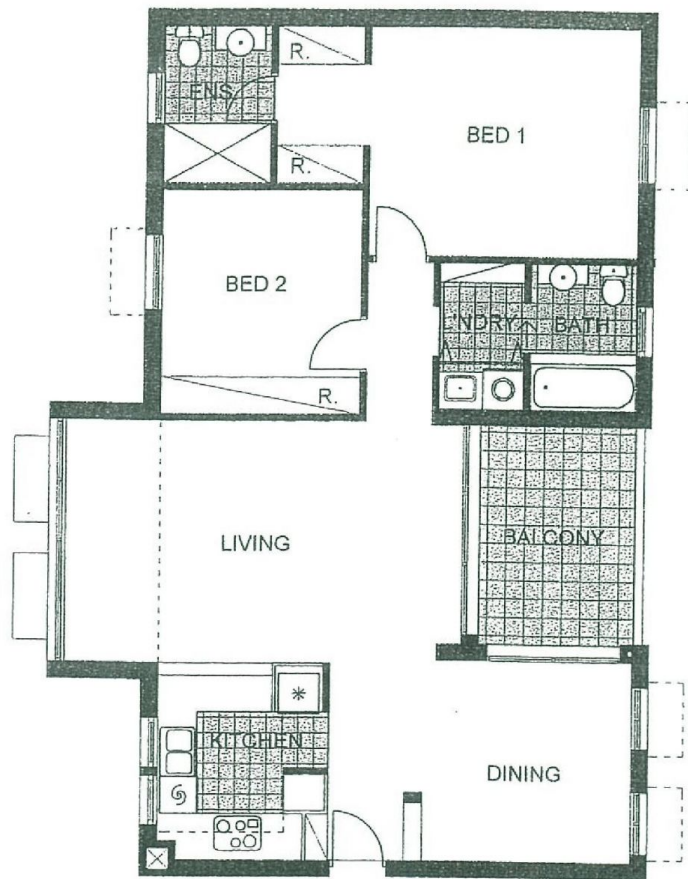
Agent

Sarah Fowell

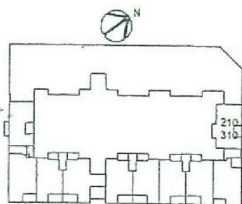
 0437 492 129

 rentals@morton.com.au

morton.com.au



"The information contained herein is intended as an introduction to the the general content of the project and is subject to variation. Interested parties should rely on their own enquiries and the contract for sale. The developer reserves the right to vary from these descriptions as it deems necessary or as any relevant authority may require."



2 BEDROOM

APARTMENT 210,310

TYPE-E1

BUILDING AREA= 110 m2

OUTDOOR AREA =9 m2

TOTAL AREA=119 m2

LOT 11

PORTOFINO