



morton.

Wentworth Point 222/3 Stromboli Strait

 1  1  1

The Waterfront is located moments to Sydney Olympic Park main venues, train station, Bicentennial Park and Millennium Parklands. Located in Napoli, this is your opportunity to move into this one bedroom apartment only a short stroll from The Promenade and The Piazza.

- Combined living and dining rooms
- Freshly painted throughout
- Full kitchen with stainless steel appliances with brand new rangehood & dishwasher
- Great size rectangular balcony
- Gas cooking and quality finishes throughout
- Good size bedroom with built-in wardrobes
- Laundry room and clothes dryer
- Single car space with storage cage

View

As advertised or by appointment

Agent

Sarah Fowell

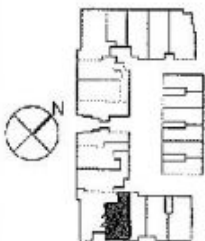
 0437 492 129

 rentals@morton.com.au

morton.com.au



"The information contained herein is intended as an introduction to the general content of the project and is subject to variation. Interested parties should rely on their own enquiries and the contract for sale. The developer reserves the right to vary from these descriptions as it deems necessary or as any relevant authority may require."



LEVEL 2



1 BEDROOM

APARTMENT 222

TYPE H

INTERNAL AREA 60 sqm

OUTDOOR AREA 18 sqm

TOTAL AREA 78 sqm

NAPOLI