



morton.

Waterloo 11305/5 Sam Sing Street

 1  1  1

Flooded with natural light and occupying a prized NE position this superbly finished apartment offers an open plan living and dining area leading to a sun drenched winter garden enjoying park views.

- Kitchen with built-in fridge, Miele appliances and integrated dishwasher
- Oak timber flooring in living area, wool carpet in the bedrooms
- Bedroom with built-in robe, Ducted reverse-cycle air conditioning
- Generous sized NE facing balcony with park views
- Oversized study/office space, separate internal laundry with dryer
- Video intercom security building, car space and separate storage cage

View

As advertised or by appointment

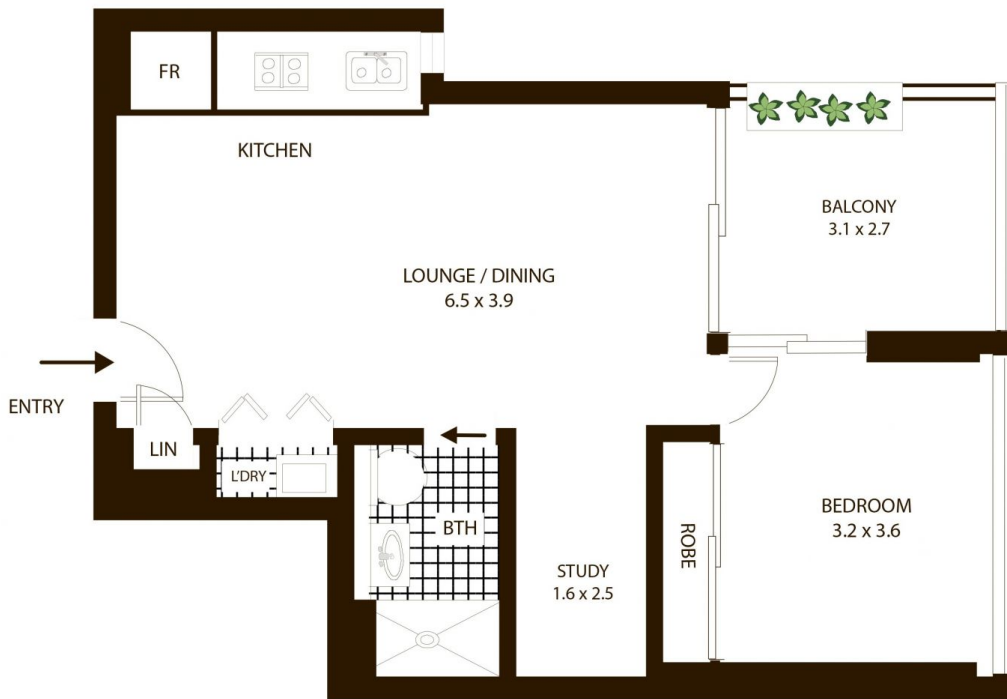
Agent

Sarah Fowell

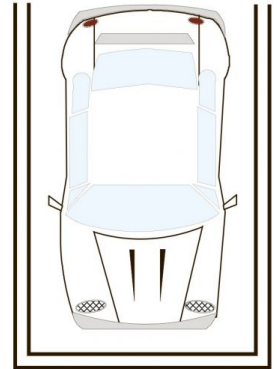
 0437 492 129

 sarah@morton.com.au

morton.com.au



SINGLE SECURE CAR SPACE
PLUS
STORAGE



11305/5 Sam Sing St, Waterloo

All measurements are approximate only. Plan is provided as an indication of layout

