



morton.

Wentworth Point 578/4 The Crescent

 2  2  2

Positioned in the exclusive award-winning 'Valencia' complex, this contemporary apartment showcases generously proportioned interiors and state-of-the-art finishes throughout. Featuring a large floor plan with an east facing setting, this superb apartment is conveniently located only moments to the water's edge.


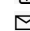
- With a welcoming open lounge and dining space
- Double bedrooms, built-ins, master has an ensuite
- Expansive kitchen, gas appliances, Caesarstone benches
- Separate study area, air conditioning and storage
- Facilities include pool, gym, library and tennis courts
- Footsteps to cafes, shops and a vibrant village lifestyle

View



As advertised or by appointment

Agents

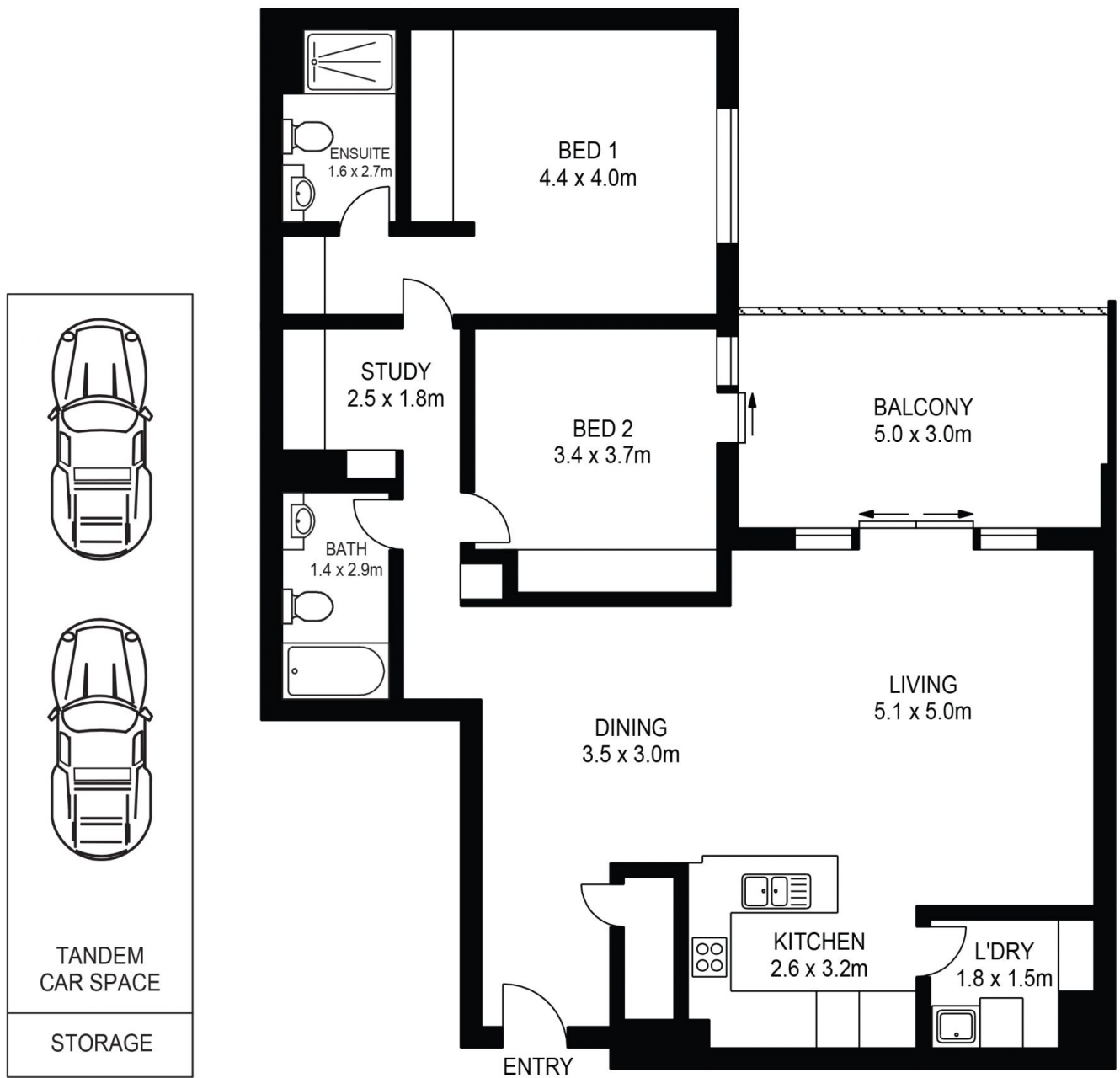
Sarah Fowell

 0437 492 129
 rentals@morton.com.au

Dylan Choe

 0416 932 977
 dylanchoe@morton.com.au

morton.com.au



578/4 THE CRESCENT WENTWORTH POINT



www.assetphotographers.com.au

Please note these measurements are approximate only. The plans are intended as a rough guide for illustrative purposes. It is not warranted or guaranteed to be correct nor is it a part of the sale or rental contract.

