



morton.

Macquarie Park 1B/23-27 Halifax Street



Leasing from developer, inspections available Mon to Sat

Great opportunity to lease one of the finest and newest apartments in NBH at Lachlan's Line, an iconic development perfectly positioned above a bustling town square at the heart of the new Lachlan's Line masterplan. We have a selection of beautiful 1-bedroom apartments with different layouts.

- Generous open plan design with timber floorboards throughout living areas
- Good sized study area with large window as extra home office
- Quality designer kitchen with SMEG gas appliances
- Bathroom has floor to ceiling tiles, mirrored vanity cabinet
- Spacious bedroom with built-in robe, large enclosed balcony
- One car space, security access, video intercom
- Internal laundry with dryer, air-conditioning, NBN internet
- Lush landscaped gardens, BBQ & pool, onsite building manager
- 1 stop to Chatswood, 1 stop to Macquarie Centre, 2 stops to

morton.com.au

View

As advertised or by appointment

Agent

Sandy Shen

📞 0410 593 246

✉️ sandy.shen@morton.com.au



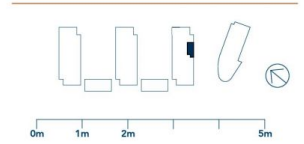
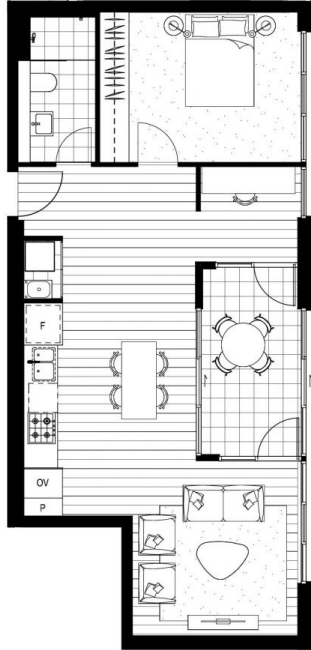
1B.11	
Internal Area	55-59m ²
External Area	6-18m ²
Total Area	61-67m ²

HIDEAWAY

15.03, 16.03

HEARTH

15.03, 16.03



NBHSYDNEY.COM 1800 388 788

REV D_01.06.18

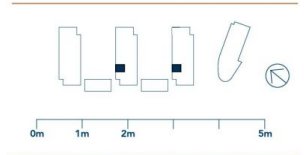
Refer to General Arrangement Plans for specific unit locations, orientation and context. Note that all graphics including balustrades, glazing units, door units and the like should be taken to be indicative only. Window locations and operable window and door units are shown as indicative only and are subject to change. Ducts and air-conditioning units and their locations are shown as minimal and are subject to change. Floor plans are at an unspecified scale. All internal and external unit areas and sizes are indicated as approximate only and are subject to final strata survey. *Varies - possible window position for each individually listed unit only. Refer to the General Arrangement Plans for exact window and door positions for each individual unit. Please note that this floor plan was produced prior to construction. The information here is believed to be correct but is not guaranteed. Changes may be made during construction and dimensions, areas, fittings and specification are subject to change without notice in accordance with the provisions of the contract for sale. The furniture and furnishings depicted are not included with and sale and purchases must refer to the contract for sale for a list of inclusions. The position of furniture and furnishings should not be taken to be indicative of final positions of power points, TV connection points and the like. Prospective purchasers must rely on their own enquiries. Bulkheads for services are not depicted.



1B.03_C	
Internal Area	53-57m ²
External Area	8-10m ²
Total Area	61-67m ²

HIDEAWAY
12.10, 13.05, 15.08, 16.08

HEARTH
12.10, 13.05, 15.08, 16.08



NBHSYDNEY.COM 1800 388 788

REV E_26.07.2018

Refer to General Arrangement Plans for specific unit locations, orientation and context. Note that all graphics including balustrades, glazing units, door units and the like should be taken to be indicative only. Window locations and operable window and door units are shown as indicative only and are subject to change. Ducts and air-conditioning units and their locations are shown as minimal and are subject to change. Floor plans are at an unspecified scale. All internal and external unit areas and sizes are indicated as approximate only and are subject to final strata survey. *Hearths - possible hearth position for each individually listed unit only. Refer to the General Arrangement Plans for exact window and door positions for each individual unit. Please note that this floor plan was produced prior to construction. The information here is believed to be correct but is not guaranteed. Changes may be made during construction and dimensions, areas, fittings and specification are subject to change without notice in accordance with the provisions of the contract for sale. The furniture and furnishings depicted are not included with and sale and purchase must refer to the contract for sale for a list of inclusions. The position of furniture and furnishings should not be taken to be indicative of final positions of power points, TV connection points and the like. Prospective purchasers must rely on their own enquiries. Bulkheads for services are not depicted.