



morton.

Wentworth Point 236/25 Bennelong Parkway

 2  2  1

Occupying an ultra-convenient setting in one of Wentworth Point's premier communities, this impressive apartment seamlessly combines accessible comfort with understated designer style. With absolutely nothing to add, this is an ideal opportunity for the investor, downsizer and professional couple.

- Dual courtyards are perfect for barbecue entertaining
- Open plan living with distinct lounge and dining areas
- Master bedroom boasts ensuite, mirrored built-in robes
- Deluxe kitchen, Caesarstone benches, gas appliances
- External storage, air conditioning, secure single garage
- Well presented with quality appointments throughout

View

As advertised or by appointment

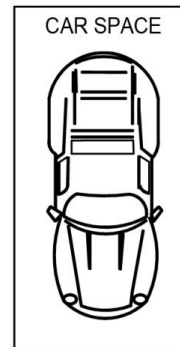
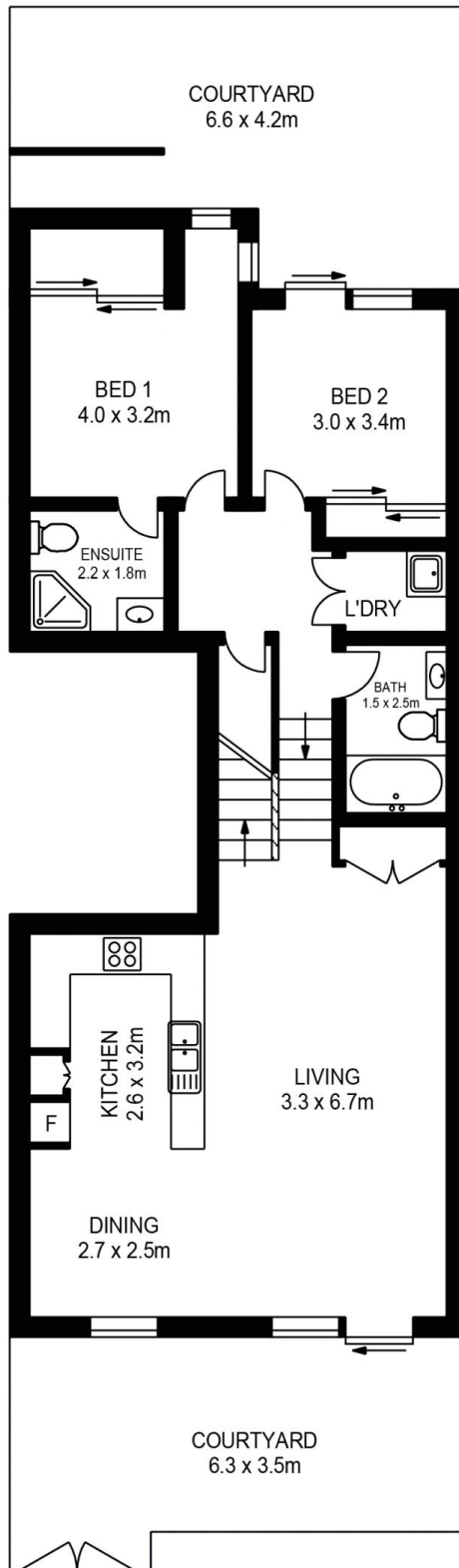
Agent

Dylan Choe

 0416 932 977

 dylanchoe@morton.com.au

morton.com.au



236/25 BENNELONG PARKWAY, WENTWORTH POINT



Please note these measurements are approximate only. The plans are intended as a rough guide for illustrative purposes. It is not warranted or guaranteed to be correct nor is it a part of the sale or rental contract.

