



morton.

Werrington County 14 Ovens Drive

 3  1  3

Beautifully positioned in the renowned family-oriented pocket of Werrington County, this home is ideal for the first home buyer seeking a large backyard with plenty of scope to put their own stamp on it.

- Large sunroom that would be an ideal playroom
- Separate studio ideal for home office
- Ducted air conditioning throughout
- Three spacious bedrooms with built-in robes
- Lock up garage with double carport
- Massive fully fenced backyard
- Freshly painted with new carpet
- Great local community and quality address

View

As advertised or by appointment

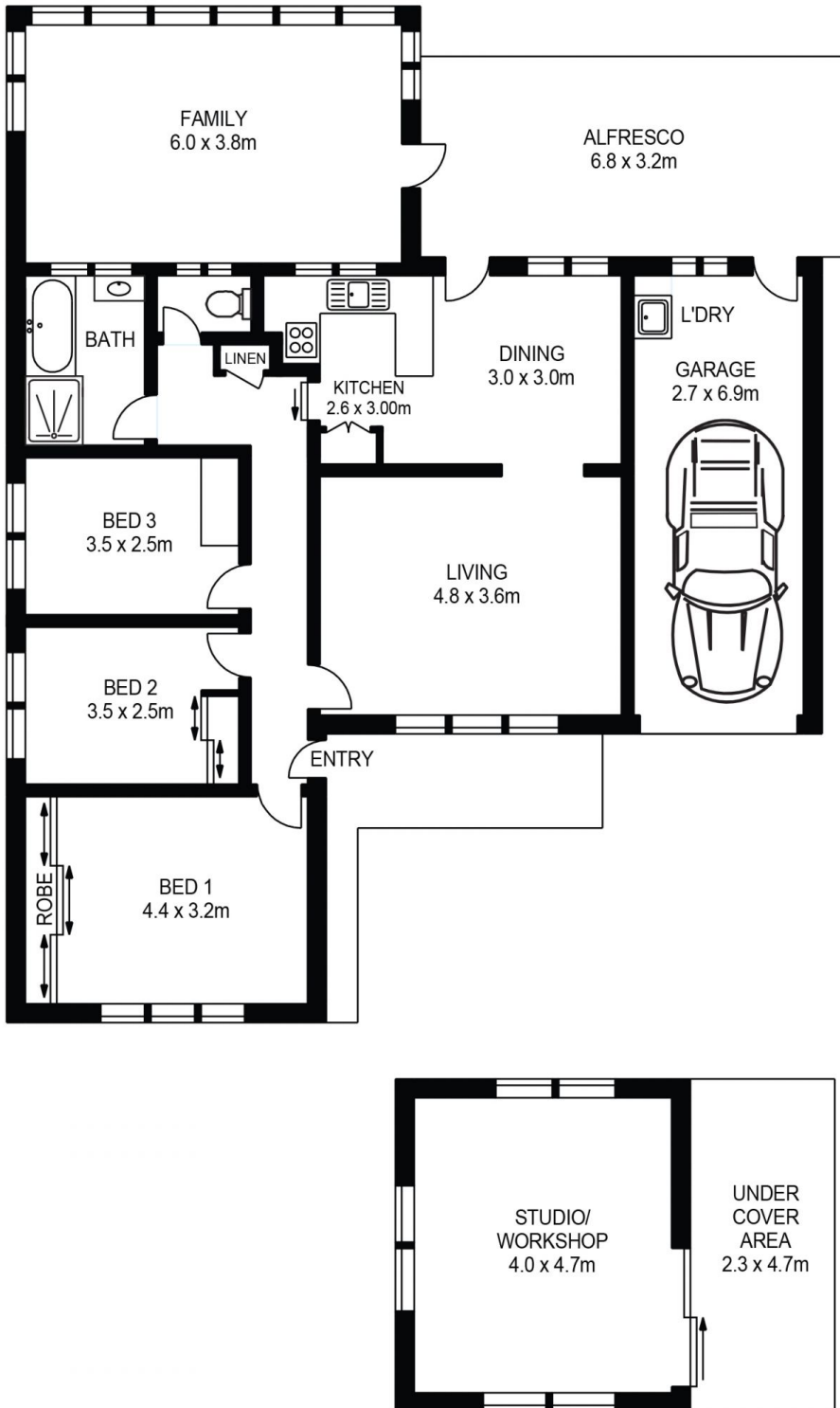
Agent

Ian Ahearn

 0457 483 610

 ian.ahearn@morton.com.au

morton.com.au



14 OVENS DRIVE, WERRINGTON COUNTY



Please note these measurements are approximate only. The plans are intended as a rough guide for illustrative purposes. It is not warranted or guaranteed to be correct nor is it a part of the sale or rental contract.

