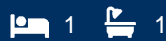




morton.

Chippendale 601/71-75 Regent Street



Meet the one-bedroom security apartment that ticks all the boxes, from its central city location, to modern features and resort-style entertainment facilities. Tucked away on the 6th floor of 11-storey building, the apartment is a rare find that even packs in an internal laundry, dishwasher and air conditioner. What's more, the building offers a first-class gymnasium and vast rooftop terrace.

- Modern security building with lift access
- Dishwasher, internal laundry, reverse-cycle a/c
- Ensuite bedroom with built-in robes & balcony
- Spacious gymnasium featuring sauna
- Rooftop terrace boasting panoramic city views
- Stroll to Central Station, World Square, Sydney Uni, and UTS

View

As advertised or by appointment

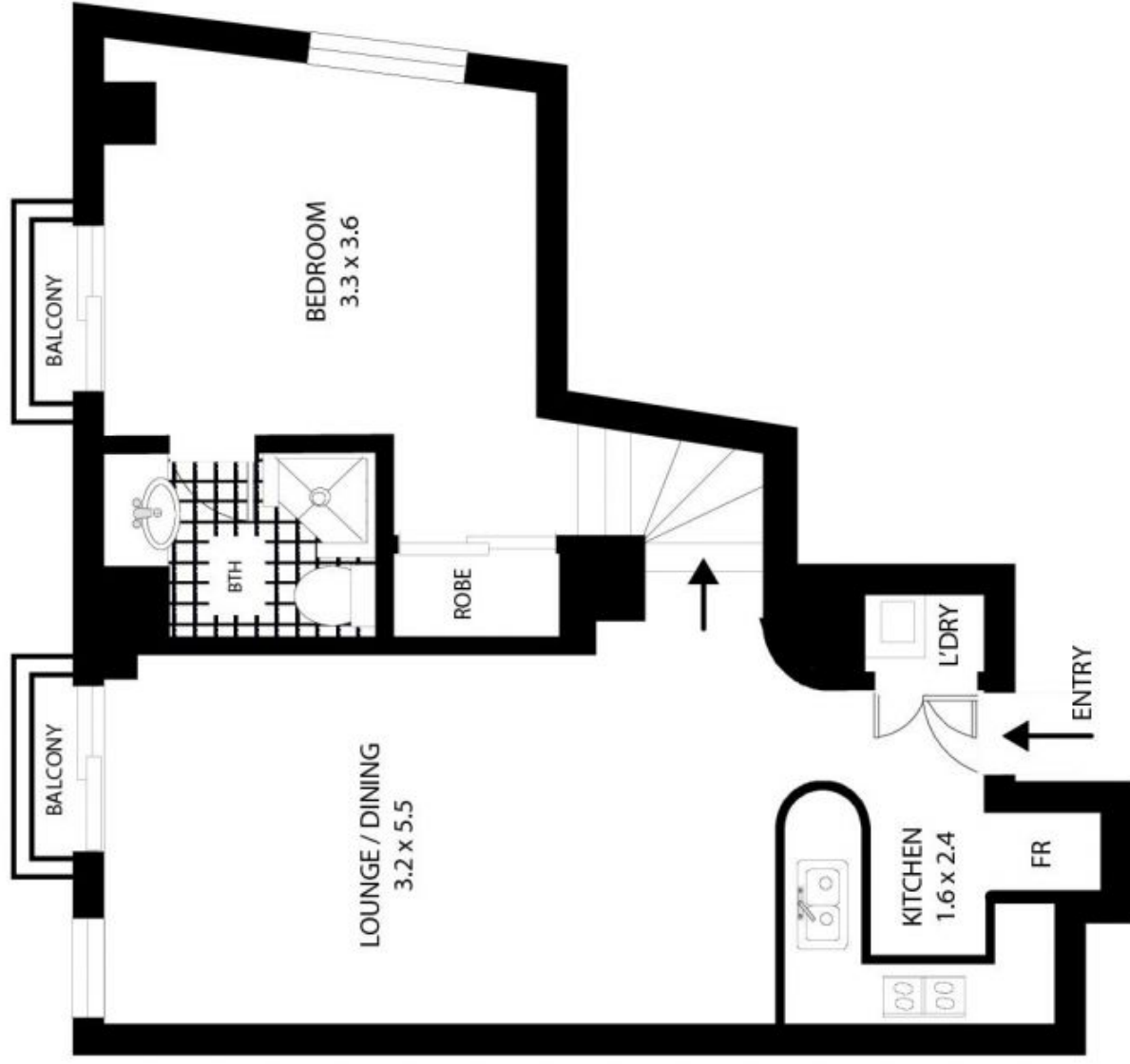
Agent

Sarah Fowell

📞 0437 492 129

✉️ sarah@morton.com.au

morton.com.au



601/71-75 Regent St Chippendale

All measurements are approximate only. Plan is provided as an indication of layout