



morton.

Zetland 18/13 Grandstand Parade

 3  2  2

Located in the heart of "Victoria Park" lies this top floor "house like" penthouse apartment. Boasting natural light and large living and bedrooms this apartment is like no other. Conveniently located close to "East Village" shopping center, parks, cafes and public transport this apartment is a must see!

Features include:

- 237sqm of indoor and outdoor space
- High ceilings
- Three double bedrooms, all with walk in/built in wardrobes
- Two large modern bathrooms, both with bath tubs
- Internal laundry with dryer
- Large entertainers courtyard
- Balconies off all bedrooms
- Separate study space
- Separate dining area
- Two car spaces

View

As advertised or by appointment

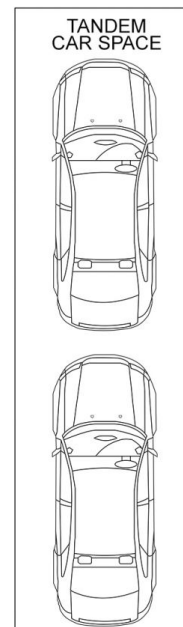
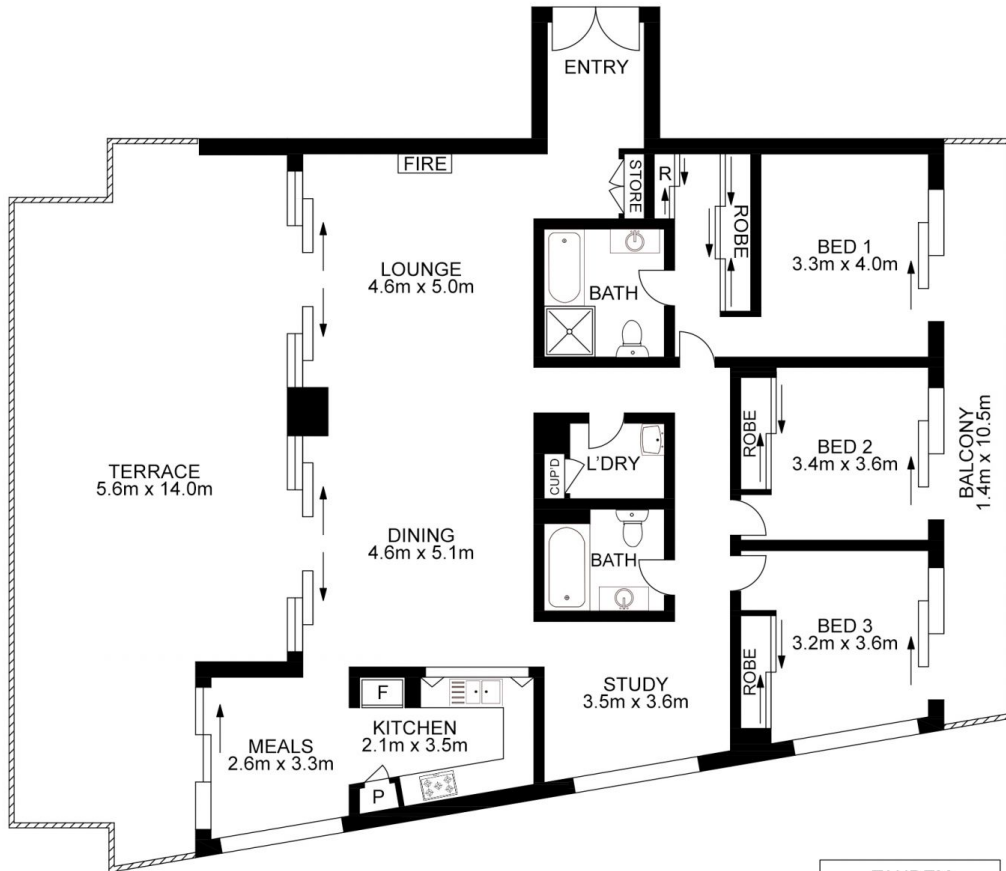
Agent

George Reale

 0408 014 469

 george@morton.com.au

morton.com.au



All information contained herein is gathered from all sources we believe to be reliable. However we cannot guarantee its accuracy and interested parties should rely on their own enquiries.

