



morton.

Woolloomooloo 134/6 Cowper Wharf Roadway

 2  2  1

Featuring an expansive 53sqm deck, this apartment is conveniently placed on the 'Finger Wharf's' eastern side and is sure to impress. The exceptional floor plan provides a wonderful flow from the living area and bedrooms on to the deck with expansive views towards Potts Point and Garden Island.

- Seamless indoor/outdoor living for entertaining
- Modern kitchen with granite benchtops, gas cooking
- Spacious master bedroom with ensuite and walk-in robe
- Second bedroom with built-in robe, second bathroom
- Internal laundry, shelving and ample storage
- Reverse cycle air-con, secure onsite parking

View

As advertised or by appointment

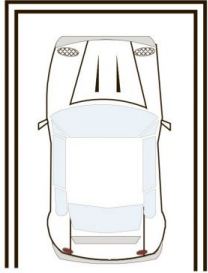
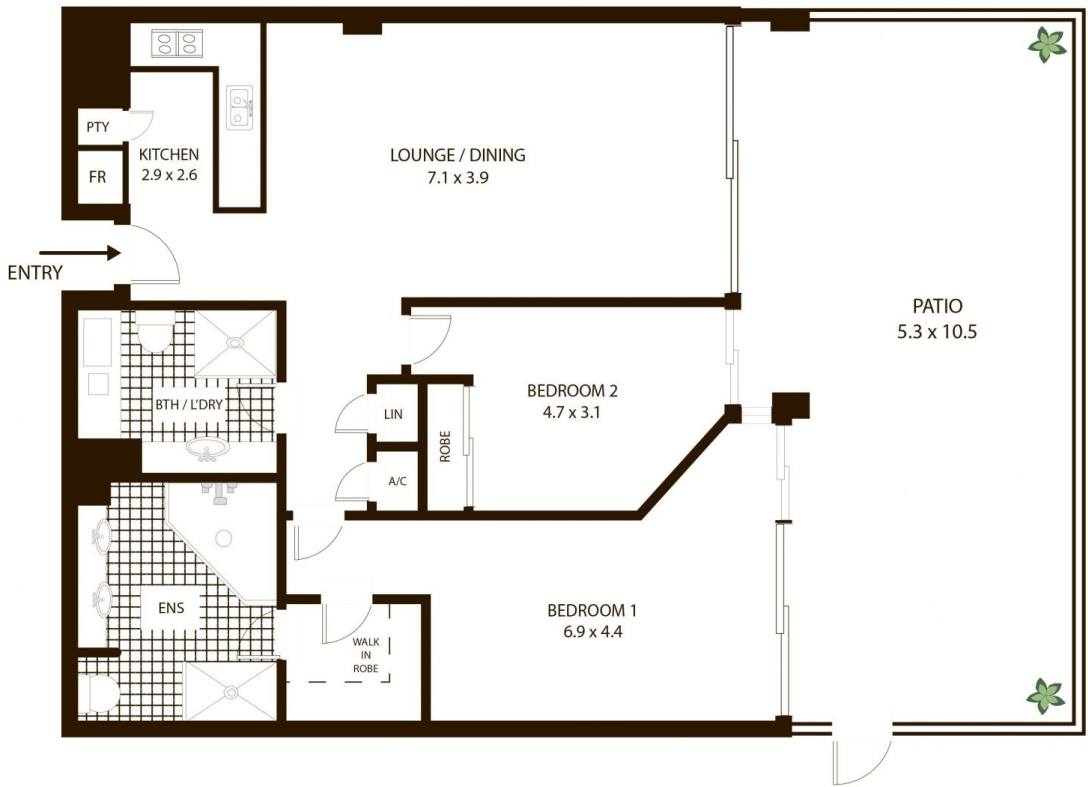
Agent

Noel Jenkins

 0410 593 694

 noel@morton.com.au

morton.com.au



SECURE CAR SPACE

134/6 Cowper Wharf Rd, Woolloomooloo

All measurements are approximate only. Plan is provided as an indication of layout



SCALE