



**morton.**

**Penrith** D324/1 Lord Sheffield Circuit

 2  2  1

Located in the hub of North Penrith, Harts Landing apartments are brand new, unfurnished and offer contemporary urban living in a master-planned vibrant community called Thornton Estate. Only metres from Penrith train station, Westfield shopping centre and local parks.

- Largest and only south and north-facing plan in the building
- Stylish kitchen with stone benchtops, soft close cupboards
- Four burner stove top with stainless steel appliances
- Reverse cycle A/C, block-out roller blinds throughout
- Wool-blend carpeted bedrooms with mirrored built-in robes
- Master with walk-in robe and quality en-suite
- NBN ready, Data/TV/PayTV points in living & bedroom
- Quality bathroom with mirrored vanity cabinet
- Internal laundry with dryer

**View**

As advertised or by appointment

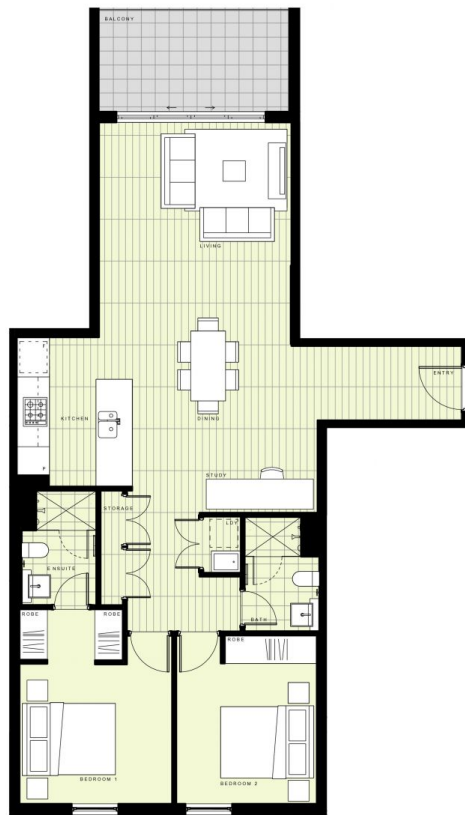
**Agent**

**Amy Torbarina**

 0438 977 172

 amy@morton.com.au

**morton.com.au**



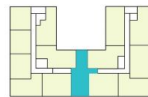
## BUILDING A

### LEVEL 3

#### APARTMENT A324 LOT 23

2 BEDROOM + STUDY

INTERNAL AREA	87m <sup>2</sup>
EXTERNAL AREA	.8m <sup>2</sup>
<b>TOTAL</b>	<b>88m<sup>2</sup></b>



Disclaimer: This floor plan has been prepared for marketing purposes only. All descriptions, dimensions, depictions and other details in this floor plan may not be to scale and may vary from the property as built. Your attention is drawn to the special conditions of the contract for sale of land. No third party has any authority to make or give any representation or warranty in relation to the property unless the representation or warranty is confirmed by the vendor and included in the contract for sale of land. Revised floor plans - 14.08.18

**CALL 1300 548 588**  
**HARTSLANDING.COM.AU**  
 LORD SHEFFIELD CIRCUIT, PENRITH  
**LINK DISPLAY SUITE**  
 22 GADIGAL AVENUE, ZETLAND

PROUDLY DEVELOPED BY **PAYCE** SALES BY **LINK**