



# morton.

**Penrith** D526/1 Lord Sheffield Circuit

 2  2  1

Located in the hub of North Penrith, Harts Landing offers contemporary urban living in a master-planned vibrant community called Thornton Estate. Only metres from Penrith train station, Westfield shopping centre and local parks.

#### Features

- Spacious open living with floor to ceiling windows
- Two sliding doors flow to large covered balcony
- Beautiful Blue Mountains and area views
- Stylish kitchen, stone bench-tops, soft close cupboards
- Gas stove top with stainless steel appliances
- Wool-blend carpeted bedrooms with mirrored built-in robes
- Master with walk-in his and hers robe and en-suite
- Reverse cycle A/C, block-out roller blinds throughout
- NBN ready, Data/TV/PayTV points in living & bedroom
- Quality bathroom with mirrored vanity cabinet
- Internal laundry with dryer

#### View

As advertised or by appointment

#### Agent

**Amy Torbarina**

 0438 977 172

 amy@morton.com.au

[morton.com.au](https://morton.com.au)



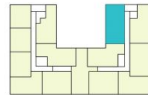
## BUILDING A

### LEVEL 5

#### APARTMENT A526 LOT 53

2 BEDROOM + STUDY

INTERNAL AREA	78m <sup>2</sup>
EXTERNAL AREA	11m <sup>2</sup>
<b>TOTAL</b>	<b>89m<sup>2</sup></b>



Disclaimer: This floor plan has been prepared for marketing purposes only. All descriptions, dimensions, depictions and other details in this floor plan may not be to scale and may vary from the property as built. Your attention is drawn to the special conditions of the contract for sale of land. No third party has any authority to make or give any representation or warranty in relation to the property unless the representation or warranty is confirmed by the vendor and included in the contract for sale of land. Revised floor plans - 14.08.18

**CALL 1300 548 588**  
**HARTSLANDING.COM.AU**  
 LORD SHEFFIELD CIRCUIT, PENRITH  
**LINK DISPLAY SUITE**  
 22 GADIGAL AVENUE, ZETLAND

PROUDLY DEVELOPED BY **PAYCE** SALES BY **LINK**