



morton.

Camperdown 62/5-11 Pyrmont Bridge Road



LEASED BY MICHAEL CONFOS - DEPOSIT TAKEN This spacious, north facing, courtyard apartment is located in DNA, Camperdown's prestigious development created by leading architect, Marchese Partners.

- Spaced over 58sqm internally as well as a 23sqm courtyard with private access
- Combined lounge/dining area which leads onto a large private courtyard
- Sleek gas kitchen with steel appliances and stone bench tops
- Spacious bedroom with built in robes and bathroom
- Additional features include NBN Coverage (high speed internet), ample storage, internal laundry with dryer and ducted air conditioning

View

As advertised or by appointment

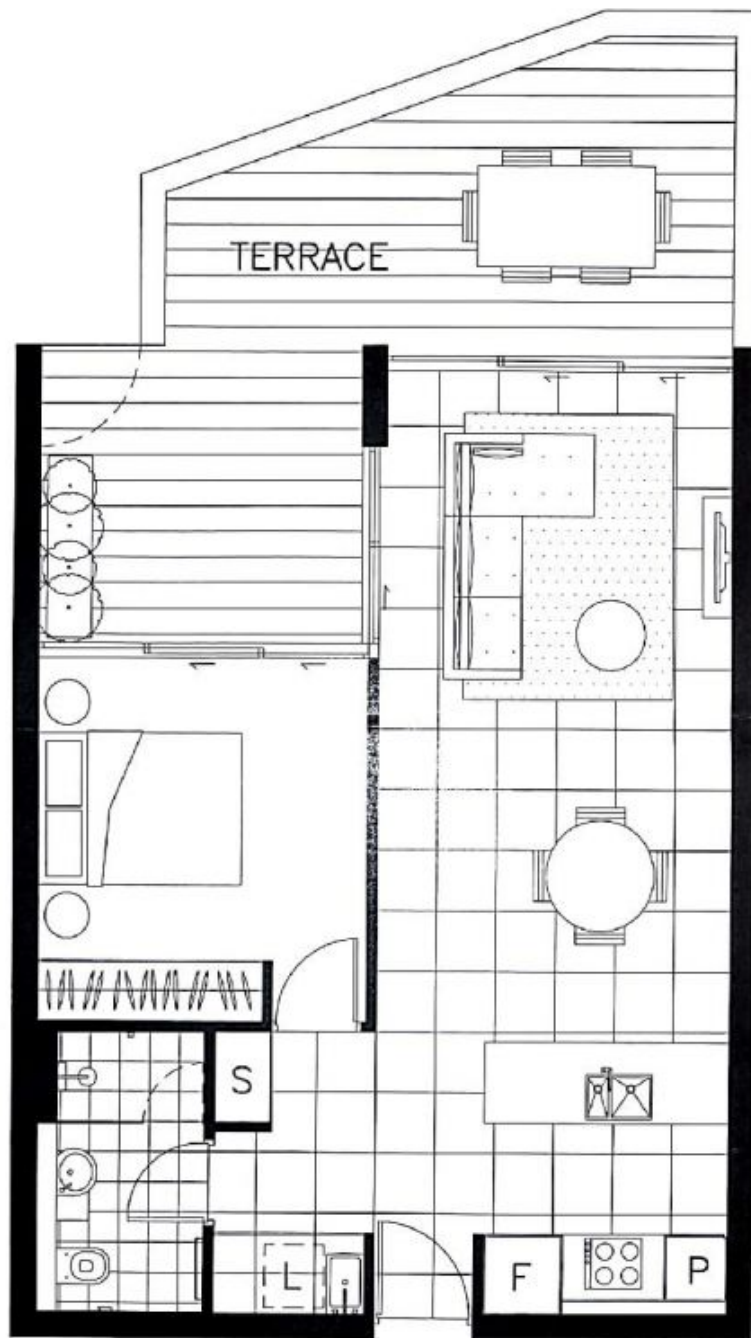
Agent

Morton RE



rentals@morton.com.au

morton.com.au



TERRACE

S

L

F

P

CAMPERDOWN

BUILDING B
GROUND FLOOR
G06B

1 BEDROOM
APARTMENT

INTERNAL AREA	56m ²
EXTERNAL AREA	23m ²
TOTAL AREA	79m ²

1800 662 590 CBRE
DNACAMPERDOWN.COM.AU

DISCLAIMER: 1. PLEASE NOTE THIS LAYOUT PLAN AND DIMENSIONS PRIOR TO CONSTRUCTION. 2. THE INFORMATION IN THIS PLAN IS SUBJECT TO CHANGE WITHOUT NOTICE AND ACCEPTANCE BY THE PURCHASER OF THE CONTRACT FOR SALE. 3. THE LAYOUT AND DIMENSIONS SHOWN ARE NOT TO BE TAKEN AS A GUARANTEE OF FINAL POSITIONING OF FINISH FIXTURES. 4. CONSULT YOUR CONTRACTOR FOR THE LATEST PLAN AND DIMENSIONS. 5. THE FIGURES OF THE SQUARE AND CIRCULAR AREAS ARE GIVEN TO BE MEASUREMENTS OF FINISH FLOORING OF FINISH WALLS. 6. CONSULT YOUR CONTRACTOR FOR THE LATEST PLAN AND DIMENSIONS. 7. ALL DIMENSIONS INCLUDE THE LATEST BUILDING REGULATIONS AND THE USE OF METRIC UNITS SHALL BE GIVEN PRIORITY OVER ANY DIMENSIONS NOT IDENTICAL TO THE LATEST PLAN AND DIMENSIONS TO SCALE.

