



morton.

Sydney 1503/157 Liverpool Street

 2  2  1

Offering spectacular views over Hyde Park, St Mary's Cathedral and beyond to Sydney Harbour this two bed plus study apartment is located in The Hyde, one of Hyde Park's most prestigious addresses.

- Two large bedrooms both with north facing park views
- Open lounge room with stunning floor to ceiling windows
- Separate study, perfect for a home office
- Spacious, gourmet kitchen with gas appliances
- Entertainers balcony with breathtaking views
- Two opulent bathrooms, ensuite with bath
- Additional features include air conditioning, internal laundry and one secure car space

View

As advertised or by appointment

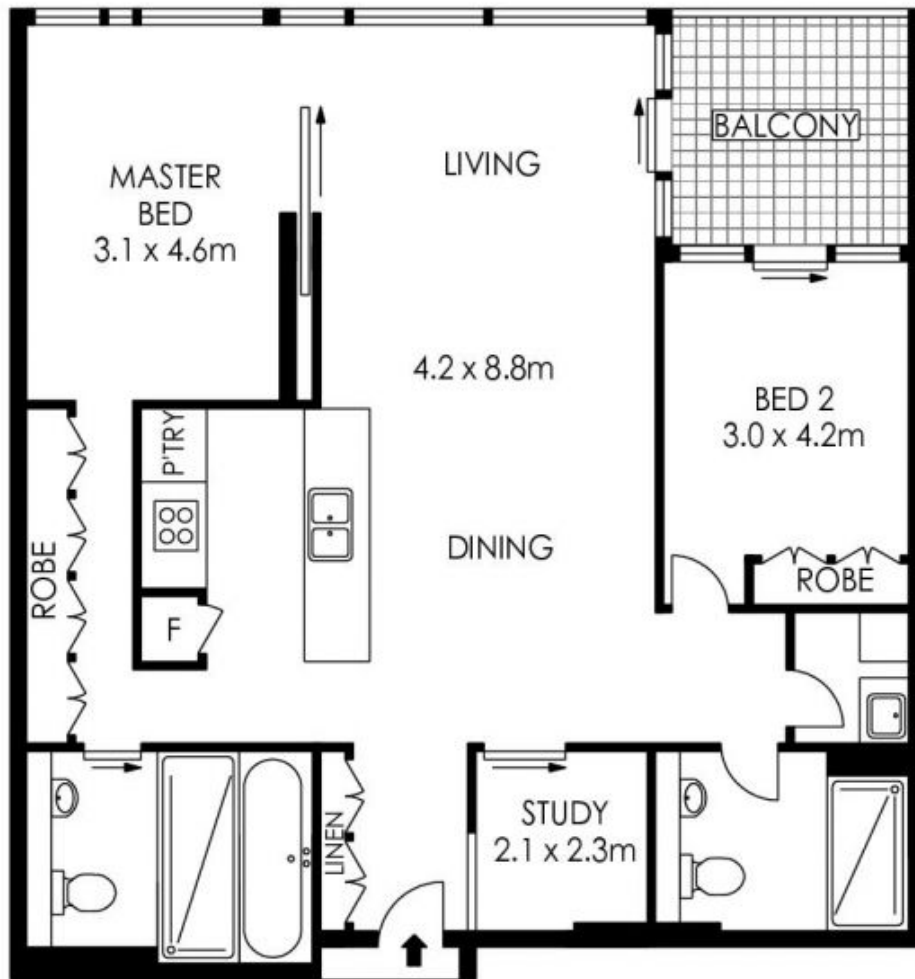
Agent

Morton RE

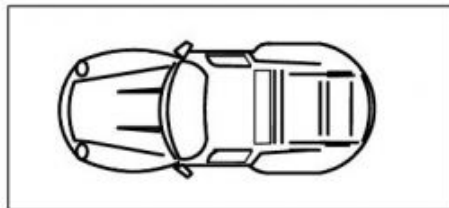
 [rentals@morton.com.au](tel:)
 rentals@morton.com.au

morton.com.au

MORTON & MORTON



CARSPACE



1503/157 Liverpool Street, Sydney

The information above is provided in good faith and has been provide to us from a variety of sources. We have not verified whether the information is accurate and do not have any belief one way or other in its accuracy. We do not accept any responsibility to any person for its accuracy and do no more than pass it on. All interested parties should rely on their own inquiries in order to determine whether or not this information is in fact accurate.